

Team Mates



2017

WAREHOUSE



BLK
Black

NAV
Navy

OXF
Oxford

BRH
Birch

PRO10 FLEECE CREW

10CRJMO

\$55.00

83% Cotton/17% Polyester
12.5 OZ / 424 GSM

Sizes: S-XXL Oversize: 3XL-4XL

- Ring Spun Yarn, provides a soft comfortable feel.
- Premium Heavy weight 3 End Fleece, helps provide additional warmth.
- Anti Pill, ensures an always smooth and comfortable feel.
- 1x1 rib with spandex, collar, side inserts, cuffs, and band for added stretch and recovery for a great fit.
- 2-ply rib side panels and undersleeve gusset for greater range of movement.
- Imported.

Decoration Type:

Screen Print, Embroidery, Twill

PRO10 FLEECE PULLOVER HOOD

10HRJMO

\$60.00

83% Cotton/17% Polyester
12.5 OZ / 424 GSM

Sizes: S-XXL Oversize: 3XL-4XL

- Ring Spun Yarn, provides a soft comfortable feel.
- 3 End Fleece, helps provide additional warmth.
- Anti Pill, ensures an always smooth and comfortable feel.
- Front Muff Pocket, for phone and media storage.
- 2 panel, 2 ply hood, delivers additional protection from the elements.
- 1x1 rib with spandex, collar, side inserts, cuffs, and band for added stretch and recovery for a great fit.
- 2 ply rib side panels and undersleeve gusset for greater range of movement.
- Imported.

Decoration Type:

Screen Print, Embroidery, Twill



BLK
Black

NAV
Navy

OXF
Oxford

BRH
Birch



BLK
Black

NAV
Navy

OXF
Oxford

BRH
Birch

PRO10 FLEECE PANT

10PRJMO

\$55.00

83% Cotton/17% Polyester
12.5 OZ / 424 GSM

Sizes: S-XXL Oversize: 3XL-4XL

- Ring Spun Yarn, provides a soft comfortable feel.
- 3 End Fleece, helps provide additional warmth.
- Anti Pill, ensures an always smooth and comfortable feel.
- Elastic Waistband With Chunky Knit Drawcord, for an adjustable comfort fit.
- 1x1 ribbed welt pockets.
- Imported.

Decoration Type:

Screen Print, Embroidery, Twill



NEW

MEN'S COTTON RICH FLEECE PULLOVER HOOD

82HNSM0

\$37.50

Heathers: 66% Cotton/34% Polyester
 Medium Grey Heather: 75% Cotton/25% Polyester
 Ash: 82% Cotton/18% Polyester
 8.5 OZ / 288 GSM

Sizes: XS-XXL Oversize: 3XL-4XL

- Ring Spun Yarn, delivers a soft comfortable feel.
- 3 End Fleece, helps provide additional warmth.
- Anti Pill, ensures an always smooth and comfortable feel.
- Zippered Front Muff Pocket, for phone & media storage.
- Two-ply hood with grommets, for additional protection from the elements.
- Tonal "R" logo tab at Left Sleeve.
- Imported.

Decoration Type:

Screen Print, Embroidery, Twill



MEN'S COTTON RICH FLEECE CREW

NEW

82CNSM0

\$30.00

Heathers: 66% Cotton/34% Polyester
 Medium Grey Heather: 75% Cotton/25% Polyester
 Ash: 82% Cotton/18% Polyester
 8.5 OZ / 288 GSM

Sizes: XS-XXL Oversize: 3XL-4XL

- Ring Spun Yarn, delivers a soft comfortable feel.
- 3 End Fleece, helps provide additional warmth.
- Anti Pill, ensures an always smooth and comfortable feel.
- Zippered Front Muff Pocket, for phone & media storage.
- Tonal "R" logo tab at Left Sleeve.
- Imported.

Decoration Type:

Screen Print, Embroidery, Twill





NEW

MEN'S COTTON RICH FLEECE POCKET PANT

82PNSMO \$30.00

Heathers: 66% Cotton/34% Polyester
 Medium Grey Heather: 75% Cotton/25% Polyester
 Ash: 82% Cotton/18% Polyester
 8.5 OZ / 288 GSM

Sizes: S-XXL Oversize: 3XL-4XL

- Ring Spun Yarn, delivers a soft comfortable feel.
- 3 End Fleece, helps provide additional warmth.
- Anti Pill, ensures an always smooth and comfortable feel.
- Side Entry Pockets, plus Hidden Media Pocket, for additional media storage.
- Imported.

Decoration Type:
 Screen Print, Embroidery



951 Ash H5N Navy Heather A7I Charcoal Grey Heather 7J Medium Grey Heather



HZB Charcoal Grey Heather A7J Medium Grey Heather

MEN'S COTTON RICH FLEECE JOGGER

NEW

82JNSMO \$32.50

Heathers: 66% Cotton/34% Polyester
 Medium Grey Heather: 75% Cotton/25% Polyester
 Ash: 82% Cotton/18% Polyester
 8.5 OZ / 288 GSM

Sizes: XS-XXL Oversize: 3XL

- Tapered Fit.
- Ring Spun Yarn, delivers a soft comfortable feel.
- 3 End Fleece, helps provide additional warmth.
- Zippered Pockets, for phone & media storage.
- Anti Pill, ensures an always smooth and comfortable feel.
- Imported.

Decoration Type:
 Screen Print, Embroidery



DRI-POWER® FLEECE ¼ ZIP CADET

1Z4HBM0

\$25.50

50% Cotton/50% Polyester
 Oxford: 52% Polyester/48% Cotton
 9.3 OZ / 315 GSM

Sizes: S-XXL Oversize: 3XL

- Dri-Power® Moisture Wicking Fabric, keeps you dry & warm.
- Reverse coil center front zipper with jersey zipper garage.
- Side entry welt pockets, provides storage and warmth.
- 1x1 ribbed cuffs and waistband to help stay in place.
- "R" logo flagtag on left hem.

Decoration Type:

Screen Print, Embroidery, Twill



BLK
Black

OZB
Navy

OXF
Oxford

CD1
Black Heather

DRI-POWER® FLEECE COLORBLOCK HOOD

693HBM0

\$27.00

50% Cotton/50% Polyester
 Oxford: 52% Polyester/48% Cotton
 9.3 OZ / 315 GSM

Sizes: S-XXL Oversize: 3XL-4XL

- Dri-Power® Moisture Wicking Fabric, keeps you dry & warm.
- Three piece double ply hood, provides protection from the elements.
- Front muff pocket, provides storage and warmth .
- "R" logo flagtag on left hem.

Decoration Type:

Screen Print, Embroidery, Twill



OBK
Oxford/Black

OFN
Oxford/Navy

WHF
White/Oxford

OTD
Oxford/True Red



DRI-POWER® FLEECE CREW

698HBM1 **\$18.50**
 50% Cotton/50% Polyester
 Oxford: 52% Polyester/48% Cotton
 9.3 OZ / 315 GSM

Sizes: S-XXL Oversize: 3XL-4XL

- Dri-Power® Moisture Wicking Fabric, keeps you dry & warm.
- Rib knit cuffs and waistband, for added comfort.
- "R" logo tab at waistband.
- Imported.

Decoration Type:
 Screen Print, Embroidery, Twill



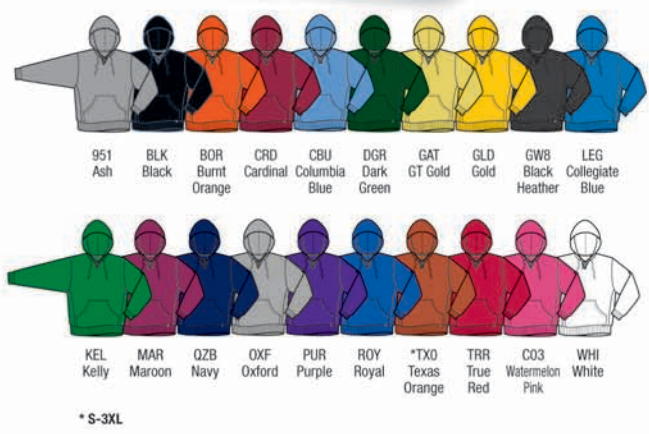
DRI-POWER® FLEECE PULLOVER HOOD

695HBM1 **\$25.50**
 Colors: 50% Cotton/50% Polyester
 Oxford: 52% Polyester/48% Cotton
 9.3 OZ / 315 GSM

Sizes: S-XXL Oversize: 3XL-4XL

- Dri-Power® Moisture Wicking Fabric, keeps you dry & warm.
- Two-Ply Hood With Grommets and drawcord for additional protection from the elements.
- Rib knit cuffs and waistband, for added comfort.
- Front Muff Pocket, for phone & media storage.
- "R" logo tab at waistband.
- Imported.

Decoration Type:
 Screen Print, Embroidery, Twill





BLK Black CRD Cardinal OZB Navy OXF Oxford

DRI-POWER® FLEECE FULL ZIP HOOD

697HBM1 \$29.50

Colors: 50% Cotton/50% Polyester
Oxford: 52% Polyester/48% Cotton
9.3 OZ / 315 GSM

Sizes: S-XXL Oversize: 3XL

- Dri-Power® Moisture Wicking Fabric, keeps you dry & warm.
- Two-Ply Hood With Grommets and matching draw cord, delivers additional protection from the elements.
- Full front center zipper.
- Rib knit cuffs and waistband, for added comfort.
- Front Muff Pocket, provides storage and warmth.
- "R" logo tab at waistband.
- Imported.

Decoration Type:
Embroidery, Screen Print, Twill

DRI-POWER® CLOSED-BOTTOM FLEECE POCKET PANT

029HBM0 \$23.00

Colors: 50% Cotton/50% Polyester
Oxford: 52% Polyester/48% Cotton
9.3 OZ / 315 GSM

Sizes: S-XXL Oversize: 3XL

- Dri-Power® Moisture Wicking Fabric, keeps you dry & warm.
- Side Entry Pockets, provides storage and warmth.
- Elastic Waistband With Inside Quickcord, for an adjustable comfort fit.
- Elastic Hem Leg Bottoms.
- "R RUSSELL" on right hip.
- Graded inseams: S-29.5", M-30.5", L-31.5", XL-32.5", 2XL-33", 3XL-33.5", 4XL-34".
- Imported.

Decoration Type:
Embroidery, Screen Print, Twill

INSEAM:
S 29½" XXL 33"
M 30½" 3XL 33½"
L 31½" 4XL 34"
XL 32½"



BLK Black GW8 Black Heather OZB Navy *OXF Oxford

*S-4XL



INSEAM:
 S 30" XL 33"
 M 31" XXL 34"
 L 32" 3XL 35"
 4XL 36"

DRI-POWER® OPEN-BOTTOM FLEECE POCKET PANT

596HBM0 \$23.00

Colors: 50% Cotton/50% Polyester
 Oxford: 52% Polyester/48% Cotton
 9.3 OZ / 315 GSM

Sizes: S-XXL Oversize: 3XL-4XL

- Dri-Power® Moisture Wicking Fabric, keeps you dry & warm.
- Side Entry Pockets, provide storage and warmth.
- Elastic Waistband With Inside Quickcord, for an adjustable comfort fit.
- "R RUSSELL" on right hip.
- Graded inseams: S-30", M-31", L-32", XL-33", 2XL-34", 3XL-35", 4XL-36".
- Imported.

Decoration Type:

Screen Print, Embroidery, Twill



BLK Black GW8 Black Heather CRD Cardinal DGR Dark Green MAR Maroon QZB Navy OXF Oxford PUR Purple ROY Royal TRR True Red

DRI-POWER® CLOSED-BOTTOM FLEECE PANT

696HBM0 \$18.50

Colors: 50% Cotton/50% Polyester
 Oxford: 52% Polyester/48% Cotton
 9.3 OZ / 315 GSM

Sizes: S-XXL Oversize: 3XL

- Dri-Power® Moisture Wicking Fabric, keeps you dry & warm.
- Elastic hem leg bottoms.
- Graded inseams: S-29.5", M-30.5", L-31.5", XL-32.5", 2XL-33", 3XL-33.5", 4XL-34".
- Imported.

Decoration Type:

Embroidery, Screen Print, Twill



ADULT INSEAM:
 S 29½"
 M 30½"
 L 31½"
 XL 32½"
 XXL 33"
 3XL 33½"
 4XL 34"



951 Ash BLK Black GW8 Black Heather QZB Navy **OXF Oxford **TXO Texas Orange

* S-2XL
 **S-4XL



WOMEN'S LIGHTWEIGHT FLEECE CREW

LF3YHX0 **\$32.00**

60% Cotton/40% Polyester
7.6 OZ / 258 GSM

Sizes: S-XXL

- 1x1 ribbed collar, v-patch, cuffs and waistband, for added comfort.
- Raglan sleeves with 2 needle cover seam.
- "R RUSSELL" embroidery logo on lower left sleeve.
- Imported.

Decoration Type:

Screen Print, Embroidery, Twill

WOMEN'S LIGHTWEIGHT FLEECE PULLOVER HOOD

LF1YHX0 **\$34.00**

60% Cotton/40% Polyester
7.6 OZ / 258 GSM

Sizes: S-XXL

- Two piece single ply hood provides protection from the elements.
- Front Muff Pocket, for phone & media storage.
- "R RUSSELL" embroidery on wearer's left sleeve cuff.
- Imported.

Decoration Type:

Screen Print, Embroidery, Twill



WOMEN'S LIGHTWEIGHT FLEECE PANT

LF5YHX0 **\$29.00**

60% Cotton/40% Polyester
7.6 OZ / 258 GSM

Sizes: S-XXL

- Rib trim waistband with outside drawcord, for added comfort.
- Side entry pockets with rib trim.
- Upper back yoke with single needle topstitch.
- Logo at right hip.
- Imported.

Decoration Type:

Screen Print, Embroidery





YOUTH DRI-POWER® FLEECE CREW

998HBB1 \$14.00

Colors: 50% Cotton/50% Polyester
 Oxford: 52% Polyester/48% Cotton
 9.3 OZ / 315 GSM

Sizes: S-XL

- Dri-Power® Moisture Wicking Fabric, keeps you dry and warm.
- Rib knit cuffs and waistband, for added comfort.
- "R RUSSELL" logo tab at waistband.
- Imported.

Decoration Type:
 Screenprint, Embroidery, Twill



YOUTH DRI-POWER® FLEECE PULLOVER HOOD

995HBB1 \$19.50

Colors: 50% Cotton/50% Polyester
 Oxford: 52% Polyester/48% Cotton
 9.3 OZ / 315 GSM

Sizes: S-XL

- Dri-Power® Moisture Wicking Fabric, keeps you dry and warm.
- Two-Ply Hood, for additional protection from the elements.
- Rib knit cuffs and waistband to help stay in place.
- Front Muff Pocket, for phone & media storage
- "R RUSSELL" logo tab at waistband.
- Imported.

Decoration Type:
 Screenprint, Embroidery, Twill





YOUTH DRI-POWER® FLEECE FULL ZIP HOOD

997HBB1 **\$25.00**

Colors: 50% Cotton/50% Polyester
 Oxford: 52% Polyester/48% Cotton
 9.3 OZ / 315 GSM

Sizes: S-XL

- > Dri-Power® Moisture Wicking Fabric, keeps you dry and warm.
- > Two-Ply Hood, for additional protection from the elements.
- > Full Front Center Zipper.
- > Front Muff Pocket, for phone & media.
- > Rib knit cuffs and waistband, for added comfort.
- > "R RUSSELL" logo tab at waistband.
- > Imported.

Decoration Type:

Screenprint, Embroidery, Twill



BLK
Black

OXF
Oxford

QZB
Navy

YOUTH DRI-POWER® FLEECE POCKETED PANT

596HBB2 **\$14.50**

Colors: 50% Cotton/50% Polyester
 Oxford: 52% Polyester/48% Polyester
 9.3 OZ / 315 GSM

Youth Sizes: S-XL

- > Dri-Power® Moisture Wicking Fabric, keeps you dry and warm.
- > Elastic Waistband With Inside Quickcord, for an adjustable comfort fit.
- > Side Entry Pockets, provides storage and warmth.
- > Graded inseams: S-21 ¾, M-24 ¾, L-27 ¾, XL-30 ¾.
- > Heat transfer "R RUSSELL" on right hip.
- > Imported.

Decoration Type:

Embroidery, Screenprint, Twill



BLK
Black

GW8
Black
Heather

QZB
Navy

DGR
Dark Green

ROY
Royal

TRR
True Red

OXF
Oxford



TECHNICAL PERFORMANCE FLEECE HOOD

854EFM1 **\$48.00**
 100% Polyester

Sizes: S-4XL

- Dri-Power® Moisture Wicking Fabric, keeps you dry and warm.
- Self-material Outer Hood providing additional protection from the elements.
- Contrast mesh hood liner.
- Side Welt Pockets, for phone & media storage.
- Self-material Cuffs & Bottom Band.
- "R RUSSELL" logo at lower left sleeve end.
- R logo tab at lower left hood.
- Imported.

Decoration Type:

Screenprint, Embroidery, Twill



MEN'S ¼ ZIP PERFORMANCE FLEECE CADET

8TZEFM0 **\$49.00**
 100% Polyester

Adult Sizes: S – XXL Oversize: 3XL

- Dri-Power® Moisture Wicking Fabric, keeps you dry and warm.
- Self material cadet collar with mesh lining.
- Contrast center front zipper with R logo pull.
- Ribbed cuffs and waistband, for added comfort.
- Front Muff Pocket With Zippers, for secured storage.
- Left Sleeve With Zipper, for additional media storage.
- Reflective Detail On Back Neck, for visibility in low light conditions.
- Silver reflective R RUSSELL logo on lower left sleeve.
- Imported.

Decoration Type:

Screenprint, Embroidery, Twill





TECHNICAL PERFORMANCE FLEECE FULL ZIP CADET

8TJEFM1 **\$46.00**
100% Polyester

Sizes: S-3XL

- Dri-Power® Moisture Wicking Fabric, keeps you dry and warm.
- Full Front Center Zipper.
- Front Side Pockets with zippers, for secured storage.
- Right Chest Pocket with zipper, for additional media storage.
- Elastic bottom hem, for added protection from the elements.
- "R RUSSELL" logo at lower left sleeve.
- Imported.

Decoration Type:

Screenprint, Embroidery, Twill



BCS Black/Steel NYS Navy/Steel OPS Steel/Stealth DNS Dark Green/Steel



BBA Maroon/Steel BBB Purple/Steel RYS Royal/Steel TUS True Red/Steel

TECH FLEECE PANT

838EFM2 **\$42.50**
100% Polyester

Sizes: S-XXL Oversize: 3XL-4XL

- Dri-Power® Moisture Wicking Fabric, keeps you dry and warm.
- Natural Stretch & Quick Dry Material, provides a dry full motion fit.
- Multi-needle elastic waistband with Russell logo, ¼" exposed elastic at top of waistband.
- Side Entry Pockets, for phone & media storage.
- Back Zippered Pocket, for additional secured storage.
- Zippered Leg Openings, helping ease getting in & out of pants.
- "R RUSSELL" on right hip.
- Imported.

Decoration Type:

Screenprint, Embroidery, Twill



BLK Black NAV Navy OXF Oxford SHL Stealth STE Steel



WOMEN'S TECH FLEECE FULL ZIP JACKET

TF7EFX0
100% Polyester

\$52.50

Sizes: S-XXL

- Dri-Power® Moisture Wicking Fabric, keeps you dry and warm.
- Front Welt Pockets With Invisible Zippers, for phone & media storage.
- Upper Right Front Insert With Invisible Zipper, for additional secure storage.
- Side panels with 3-needle cover stitching.
- Reflective heat transfer at lower left front, for visibility in low light conditions.
- Logo on outer back neck.
- Imported.

Decoration Type:
Embroidery, Screenprint



WOMEN'S TECH FLEECE PANT

TF5EFX0
100% Polyester

\$45.00

Sizes: S-XXL

- Dri-Power® Moisture Wicking Fabric, keeps you dry and warm.
- Side Entry Pockets, for phone & media storage.
- Reflective heat transfer lower left leg, for visibility in low light conditions.
- Logo on left front hip.
- Imported.

Decoration Type:
Embroidery, Screenprint





STRIATED PERFORMANCE TEE

ST6NLM0

\$18.00

100% Polyester
4.3 OZ / 146 GSM

Sizes: S-4XL

- Dri-Power® Moisture Wicking Fabric, keeps you dry & cool.
- Set-in sleeves, provides full range of motion.
- "R RUSSELL" on left sleeve end.
- Set-in self-material collar.
- Imported.

Decoration Type:

Screen Print



WOMEN'S STRIATED TEE **NEW**

ST7NLX0

\$18.00

100% Polyester
4.3 OZ / 146 GSM

Sizes: S-XXL

- Dri-Power® Moisture Wicking Fabric, keeps you dry & cool.
- Set-in sleeves, provides full range of motion.
- "R RUSSELL" on left sleeve end.
- Imported.

Decoration Type:

Embroidery, Screen Print



Men's version: ST6NLM0



PLAYER'S TEE

28MHQM0
 20% Cotton / 80% Polyester
 4.4 OZ / 150 GSM

\$14.50

Sizes: S – XXL
 Oversize: 3XL – 4XL

- Dri-Power® Moisture Wicking Fabric, keeps you dry & cool.
- Three-needle coverstitching at armholes and sideseams.
- Heat transfer "R RUSSELL" logo on left sleeve end.
- Imported.

Decoration Type:
 Embroidery, Screen Print



WOMEN'S PLAYER'S TEE

28WHQX0
 20% Cotton / 80% Polyester
 4.4 OZ / 150 GSM

\$14.50

Sizes: S - XXL

- Dri-Power® Moisture Wicking Fabric, keeps you dry & cool.
- Contoured seams on front and shoulders with 3-needle coverstitching.
- Heat transfer "R RUSSELL" on left sleeve end.
- Imported.

Decoration Type:
 Embroidery, Screen Print





SUBLIMATED CAMO KAZE PERFORMANCE TEE

CMZX2M0 – Adult **\$20.00**
CMZX2B0 – Youth **\$16.50**
 100% Polyester
 4.1 OZ / 139 GSM

Adult Sizes: S-4XL
 Youth Sizes: S-XL

- Dri-Power® Moisture Wicking Fabric, keeps you dry & cool.
- Self-material collar.
- Reflective "R RUSSELL" on left sleeve end.
- Imported.

Decoration Type:
 Screen Print



AAD Black Camo **AAE** Navy Camo **AAF** White Camo **AAZ** Dark Green Camo **ABD** True Red Camo

WOMEN'S CAP SLEEVE V-NECK TEE

7P8S2XK **\$22.00**
 94% Nylon / 6% Spandex Stretch Knit – Colors
 91% Polyester / 9% Spandex Stretch Knit – White

Sizes: XS-XXL

- Moisture wicking fabric.
- Self-material V-neck.
- Compression body and sleeve.
- Flat-lock seamed construction reduces abrasion.
- "R RUSSELL" on right upper front chest.
- Imported.

Decoration Type:
 Screen Print



BLK Black **CRD** Cardinal **DGR** Dark Green **GSV** Gridiron Silver **MAR** Maroon **NAV** Navy **PUR** Purple **ROY** Royal **TRR** True Red **WHI** White



*AQU Aqua BLK Black *BOR Burnt Orange CBU Columbia Blue CRD Cardinal DGR Dark Green *GAT GT Gold GLD Gold MAR Maroon

NAV Navy PUR Purple ROY Royal SHL Stealth STE Steel TRR True Red WHI White

*Adult Only

CORE PERFORMANCE TEE

629X2M1 – Adult **\$13.50**
 629X2B1 – Youth **\$11.50**
 100% Polyester Interlock
 4.1 OZ / 139 GSM

Adult Sizes: S-4XL
 Youth Sizes: S-XL

- Dri-Power® Moisture Wicking Fabric, keeps you dry & cool.
- Anti-Odor Technology, keeps you fresh throughout your day.
- Self-material collar.
- Contrast back neck tape (stealth on all colors).
- "R RUSSELL" on left sleeve end.
- Imported.

Decoration Type:
 Embroidery, Screen Print

CORE PERFORMANCE LONG SLEEVE TEE

631X2M1 – Adult **\$16.00**
 100% Polyester Interlock
 4.1 OZ / 139 GSM

Sizes: S-4XL

- Dri-Power® Moisture Wicking Fabric, keeps you dry & cool.
- Anti-Odor Technology, keeps you fresh throughout your day.
- Self-material collar.
- "R RUSSELL" at lower left sleeve.
- Imported.

Decoration Type:
 Embroidery, Screen Print



BLK Black DGR Dark Green GAT GT Gold NAV Navy TRR True Red WHI White STE Steel BOR Burnt Orange

CRD Cardinal CBU Columbia Blue MAR Maroon PUR Purple ROY Royal SHL Stealth GLD Gold



BLK Black NAV Navy TRR True Red

WHI White ROY Royal SHL Stealth

CORE PERFORMANCE SLEEVELESS TEE

630X2M1 **\$12.50**
 100% Polyester Interlock
 4.1 OZ / 139 GSM

Sizes: S-3XL

- Dri-Power® Moisture Wicking Fabric, keeps you dry & cool.
- Anti-Odor Technology, keeps you fresh throughout your day.
- Self-material collar.
- "R RUSSELL" at outer center back neck.
- Imported.

Decoration Type:
 Embroidery, Screen Print

THE ESSENTIAL TEE COLLECTION



ESSENTIAL TEE **NEW**

64STTM0 – Adult	\$6.50
64STTB0 – Youth*	\$5.50
64STTX0 – Womens	\$6.50

60% Cotton / 40% Polyester Jersey • 4.5 oz / 153 gsm

Adult Sizes: S-XXL Oversize: 3XL-4XL Youth Sizes: S-XL Womens: XS-XXL

- Dri-Power® Moisture Wicking Fabric, keeps you dry & cool.
- Anti-Odor Technology, provides Built in Freshness Protection.
- Soft SpunYarn, delivers a soft comfortable feel.
- Imported.

Decoration Type:
Screen Print

Available April 2017





LONG SLEEVE ESSENTIAL TEE **NEW**

64LTTM0 – Adult **\$9.00**
64LTTX0 – Womens **\$9.00**

60% Cotton / 40% Polyester Jersey • 4.5 oz / 153 gsm

Adult Sizes: S-XXL Oversize: 3XL Womens: XS-XXL

- Dri-Power® Moisture Wicking Fabric, keeps you dry & cool.
- Anti-Odor Technology, provides Built in Freshness Protection.
- Soft SpunYarn, delivers a soft comfortable feel.
- Imported.

Decoration Type:
Screen Print

Available April 2017





NEW

MEN'S 1/4 ZIP PULLOVER

QZ7EAM0

\$30.00

100% Polyester 2-Tone Interlock

Sizes: XS-3XL

- Light Weight Stretch Fabric provides comfort and full mobility.
- Dri-Power® Moisture Wicking Fabric, keeps you dry & cool.
- Anti-Odor Technology, keeps you fresh throughout your day.
- "R RUSSELL" on left sleeve end.
- Imported.

Decoration Type:

Embroidery, Screen Print

Available April 2017



BLK
Black

CRD
Cardinal

DGR
Dark Green

MAR
Maroon

NAV
Navy

PUR
Purple

ROY
Royal

SHL
Stealth

TRR
True Red



NEW MEN'S ESSENTIAL POCKETED SHORT

TS7X2M0 – (Men's)
 TS7X2B0 – (Youth)
 100% Polyester Interlock

\$16.00
 \$15.00

Men's Sizes: S – XXL Oversize: 3XL
 Youth Sizes: S – XL

- Dri-Power® Moisture Wicking Fabric, keeps you dry & cool.
- Side Entry Pockets, for phone & media storage.
- Internal Drawcord, for an adjustable comfort fit.
- 10" Inseam- Men's.
- 7" Inseam-Youth.
- "R RUSSELL" at lower right leg.
- Imported.

Decoration Type:
 Screen Print, Embroidery

Available April 2017



MEN'S POCKETED PERFORMANCE SHORT

5CPERMO \$27.00
 92% Polyester / 8% Spandex Stretch Jersey

Sizes: S – XXL Oversize: 3XL

- Dri-Power® Moisture Wicking Fabric, keeps you dry & cool.
- Elastic Waistband With Inside Quickcord, for an adjustable comfort fit.
- Angled Side Entry Pockets, for phone & media storage.
- Back Welt Pocket With Zipper Closure, for additional secured storage.
- Flat Seamed Rises & Mesh Gusset, delivers ventilation & cooling.
- Side inserts with 3 needle coverstitch for added ventilation.
- 9" inseam on all sizes.
- Silver reflective heat transfer "R RUSSELL" logo lower right leg.

Decoration Type:
 Embroidery, Screen Print





MEN'S COTTON POCKET SHORT

25843M0 \$10.50

Colors: 100% Cotton
 Black Heather: 50% Cotton / 50% Polyester
 Oxford: 53% Polyester / 47% Cotton

Sizes: S-XXL Oversize: 3XL-4XL

- Internal Drawcord, for an adjustable comfort fit.
- Side entry pockets, for phone & media storage.
- 8" Inseam.
- "R RUSSELL" at lower right leg.
- Imported.

Decoration Type:
 Screen Print, Embroidery

MEN'S 9" POLYESTER TRICOT MESH POCKET SHORT

651AFM0 \$14.50

100% Polyester

Sizes: S-3XL

- Dri-Power® Moisture Wicking Fabric, keeps you dry & cool.
- Elastic Waistband With Inside Quickcord, for an adjustable comfort fit.
- Side entry pockets, provides phone & media storage.
- 9" inseam on all sizes.
- "R RUSSELL" on lower right leg.
- Imported.

Decoration Type:
 Screen Print, Embroidery



MEN'S/YOUTH POLYESTER TRICOT MESH SHORT

659AFMK – Adult \$13.50

659AFB0 – Youth \$13.00

100% Polyester Tricot Mesh

Adult Sizes: S-XXL Oversize: 3XL-4XL

Youth Sizes: S-XL

- Dri-Power® Moisture Wicking Fabric, keeps you dry & cool.
- Elastic Waistband With Inside Quickcord, for an adjustable comfort fit.
- 9" inseam adult / 7" inseam youth.
- No Pockets.
- "R RUSSELL" on upper right hip.
- Imported.

Decoration Type:
 Screen Print, Embroidery

Notes:
 White offered in S-XXL only



WOMEN'S 3" INSEAM SHORT

WS3JHX0
100% Polyester Woven

\$25.50

Women's: S - XXL

- 1" finished elastic 4 needle waistband, for comfort.
- Contrast side inserts.
- Mesh brief liner.
- "R RUSSELL" heat transfer logo on lower right leg.
- Imported.

Decoration Type:

Screen Print, Embroidery



WOMEN'S PERFORMANCE PANT

PP2JTX0
86% Polyester / 14% Spandex

\$45.00

Women's: S - XXL

- Flat waistband with 3/4" elastic, for added comfort.
- Contrast mesh in inner waistband.
- Graded inseam.
- 3/4" hemmed bottom.
- "R RUSSELL" heat transfer at wearer's right hip.

Decoration Type:

Screen Print, Embroidery



BLK
Black

NAV
Navy



LRA Black/Rock
NAF Navy/Rock
SQT True Red/Rock
YHX White/Rock

NEW MEN'S MUSCLE COMPRESSION

CM7PNM0 \$20.00
90% Polyester / 10% Spandex

Adult Sizes: S-XXL Oversize: 3XL-4XL

- Dri-Power® Moisture Wicking Fabric, keeps you dry & cool.
- Tight Compression fit, delivers a close flexible fit.
- Side Mesh Inserts, provides added ventilation.
- Flat-lock seamed construction, helps reduce abrasion.
- "R RUSSELL" on center back neck.
- Imported.

Decoration Type:
Embroidery

Available April 2017

NOTES:

Compression short: 8P1PNMK
Compression tight: 8P2PNMK

MEN'S HALF SLEEVE COMPRESSION

NEW

CH7PNM0
90% Polyester / 10% Spandex

\$22.00

Adult Sizes: S-XXL Oversize: 3XL-4XL

- Dri-Power® Moisture Wicking Fabric, keeps you dry & cool.
- Tight Compression fit, delivers a close flexible fit.
- Side Mesh Inserts, provides added ventilation.
- Flat-lock seamed construction, helps reduce abrasion.
- "R RUSSELL" on center back neck.
- Imported.



LRA Black/Rock
NAF Navy/Rock
SQT True Red/Rock
YHX White/Rock



Decoration Type:
Embroidery

Available April 2017

NOTES:

Compression short: 8P1PNMK
Compression tight: 8P2PNMK

NEW MEN'S LONG SLEEVE COMPRESSION

CL7PNM0 \$25.00
90% Polyester / 10% Spandex

Sizes: S-XXL Oversize: 3XL-4XL

- Dri-Power® Moisture Wicking Fabric, keeps you dry & cool.
- Tight Compression fit, delivers a close flexible fit.
- Side Mesh Inserts, provides added ventilation.
- Flat-lock seamed construction, helps reduce abrasion.
- "R RUSSELL" on center back neck.
- Imported.

Decoration Type:
Embroidery

Available April 2017

NOTES:

Compression short: 8P1PNMK
Compression tight: 8P2PNMK



LRA Black/Rock
NAF Navy/Rock
SQT True Red/Rock
YHX White/Rock



MEN'S PERFORMANCE COMPRESSION SHORT

8P1PNMK **\$26.00**

Body: 90% Polyester / 10% Spandex
Crotch Piece / Upper side inner mesh: 92% Polyester / 8% Spandex

Sizes: S-XXL Oversize: 3XL

- Dri-Power® Moisture Wicking Fabric, keeps you dry & cool.
- Tight Compression fit, delivers a close flexible fit.
- Flat comfortable stretch waistband.
- Mesh crotch and inserts for added ventilation.
- 4-needle flatseam construction reduces abrasion.
- Two-needle coverstitch hemmed leg bottom.
- 8" inseam.
- "R RUSSELL" on right leg.
- Imported.

NOTES:

Hook-up styles: CM7PNM0, CH7PNMO, CL7PNMO



BLK Black GSV Gridiron Silver NAV Navy ROY Royal TRR True Red WHI White

MEN'S 3/4 PERFORMANCE COMPRESSION TIGHT X NEW X

8P3PNMK **\$30.00**

Body: 90% Polyester / 10% Spandex
Crotch Piece / Upper side inner mesh: 92% Polyester / 8% Spandex

Sizes: S-XXL Oversize: 3XL

- Dri-Power® Moisture Wicking Fabric, keeps you dry & cool.
- Tight Compression fit, delivers a close flexible fit.
- Flat comfortable stretch waistband.
- 4-needle flatseam construction reduces abrasion.
- Two-needle coverstitch hemmed leg bottom.
- Graded finished inseam length.
- "R RUSSELL" on right leg.
- Imported.

NOTES:

Hook-up styles: CM7PNM0, CH7PNMO, CL7PNMO



BLK Black NAV Navy TRR True Red WHI White

Available April 2017



BLK Black DGR Dark Green MAR Maroon NAV Navy PUR Purple ROY Royal TRR True Red WHI White

PERFORMANCE TIGHT-FIT COLD WEATHER LONG SLEEVE CREW

6P3NAMK **\$45.00**

Body: 88% Polyester / 12% Spandex Stretch Knit
Mesh Inserts: 100% Polyester

Sizes: S-XXL Oversize: 3XL

- Moisture wicking fabric.
- 1" Self-material crew neck.
- Compression body and sleeves.
- Flat-seam construction reduces abrasion.
- Two-needle coverstitch hemmed sleeves and bottom.
- "R RUSSELL" back neck.
- Imported.

Decoration Type:

N/A

NOTES:

Cold Weather Compression Tight: 6PHNAMK

PERFORMANCE COLD WEATHER TIGHT

6P4NAMK **\$45.00**

Body: 88% Polyester / 12% Spandex Stretch Knit
Mesh Inserts: 100% Polyester

Sizes: S-XXL Oversize: 3XL

- Moisture wicking fabric.
- Compression body and mesh inserts.
- 1-1/2" Plush jacquard waistband with Russell logo.
- Flat-seam construction reduces abrasion.
- Two-needle coverstitch hemmed leg bottom.
- Graded inseam.
- "R RUSSELL" on right hip.
- Imported.

Decoration Type:

N/A

NOTES:

6P3NAMK



BLK Black NAV Navy TRR True Red WHI White



NEW MEN'S ESSENTIAL POLO

7EPTUM0

\$28.00

100% Polyester

Sizes: S-XXL Oversize: 3XL-4XL

- Dri-Power® moisture wicking fabric, keeps you dry & cool.
- Anti-Odor Technology, provides Built in Freshness Protection.
- UPF 30+, provides protection from the sun.
- No curl collar.
- Clean finished placket with 3 logoed buttons for modern styling.
- Imported.

Decoration Type:
Embroidery

Available April 2017

Women's version: 7EPTUX0



WOMEN'S ESSENTIAL POLO

7EPTUX0

100% Polyester

\$28.00

NEW

Sizes: S-XXL

- Dri-Power® moisture wicking fabric, keeps you dry & cool.
- Anti-Odor Technology, provides Built in Freshness Protection.
- UPF 30+, provides protection from the sun.
- No curl collar.
- Clean finished placket with 3 logoed buttons for modern styling.
- Imported.

Decoration Type:
Embroidery

Available April 2017

Men's version: 7EPTUM0



NEW MEN'S ESSENTIAL LONG SLEEVE POLO

7ELTUM0

\$37.50

100% Polyester

Sizes: S-4XL

- Dri-Power® moisture wicking fabric, keeps you dry & cool.
- Anti-Odor Technology, provides Built in Freshness Protection.
- UPF 30+, provides protection from the sun.
- No curl collar.
- Clean finished placket with 3 logoed buttons for modern styling.
- Rib cuffs, keeps your sleeves in place.
- Imported.

Decoration Type:
Embroidery

Available April 2017

GAMEDAY POLO



GAMEDAY POLO **NEW**

7GPPAM0 – Adult - 95% Polyester/5% Spandex Cooling Jersey
 7GPPAX0 – Womens - 100% Polyester

\$37.50
 \$37.50

Sizes: S-XXL Oversize: 3XL-4XL Women's: S-XXL

- Built in cooling Technology, keeps you cool & comfortable.
- Anti-Odor Technology, provides Built in Freshness Protection.
- Vented mesh back neck panel, for added ventilation & cooling.
- UPF 30+, provides protection from the sun.
- Clean finished placket with 3 "R" matte snaps for modern styling.
- Reflective tape on shoulders for high visibility in low light conditions.
- Imported.

Decoration Type:
 Embroidery

Available April 2017





MEN'S FASHION POLO

MF6NQMK

\$45.00

95% Polyester / 5% Spandex Jacquard

Sizes: S-XXL Oversize: 3XL-4XL

- Dri-Power® moisture wicking fabric, keeps you dry & cool.
- Side vents with bartacks, for added ventilation.
- Allen Solly placket with 3 buttons.
- Self-material collar.
- "R RUSSELL" embroidery on left sleeve end.
- Imported.

Decoration Type:

Embroidery



WOMEN'S FASHION POLO

WF6NQXK

\$45.00

95% Polyester / 5% Spandex

Sizes: S-XXL

- Dri-Power® moisture wicking fabric, keeps you dry & cool.
- Side vents with bartacks, for added ventilation.
- Self material cadet collar with reverse coil zipper.
- "R RUSSELL" embroidery on left sleeve end.
- Imported.

Decoration Type:

Embroidery





NEW MEN'S GOLF POLO

7GFQQM0
100% Polyester

\$42.50

Adult Sizes: S-XXL Oversize: 3XL

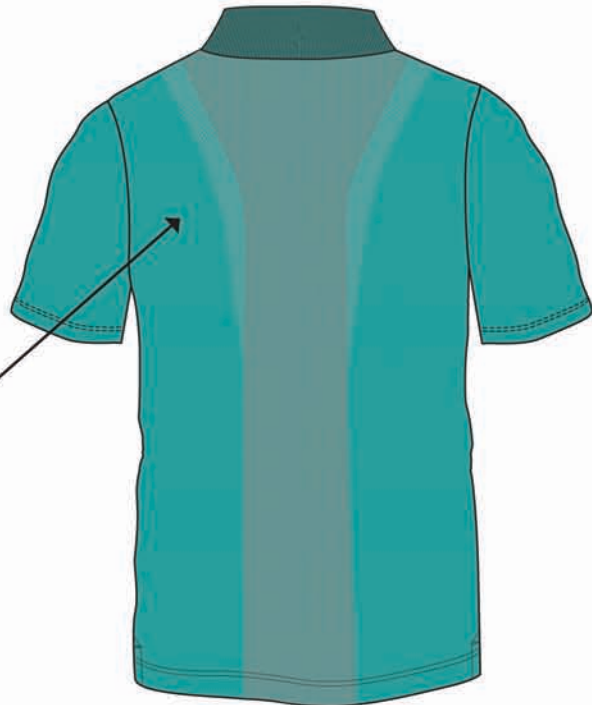
- Dri-Power® moisture wicking fabric, keeps you dry & cool.
- Anti-Odor Technology, provides Built in Freshness Protection.
- UPF 30+, provides protection from the sun.
- Clean finished placket with 3 logoed buttons for modern styling.
- Imported.

Decoration Type:
Embroidery



TARGETED BREATHABILITY
Engineered Jacquard Knit Mesh provides ventilation to keep you cool.

Available April 2017





BLK
Black



CMT
Cement

MEN'S FLAT FRONT COACHES SLACK

103CGM1
100% Polyester Microfiber

\$54.00

Sizes: 32-56

- Dri-Power® Moisture Wicking Fabric, keeps you dry & cool.
- Wrinkle Resistant Finish, for a wrinkle free wear.
- Side entry pockets, provides storage and warmth.
- Back Welt Pockets with Button Closure, for secure storage.
- 36" unhemmed inseam (pant).
- "R RUSSELL" above left back pocket.
- Imported.

TEAM DYNASTY MEN'S COACHES SHORT

102CGM1
100% Polyester Microfiber

\$43.50

Sizes: 32-56

- Dri-Power® Moisture Wicking Fabric, keeps you dry & cool.
- Wrinkle Resistant Finish, for a wrinkle free wear.
- Side Entry Pockets, provides storage and warmth.
- Back Welt Pockets With Button Closure, for secure storage.
- Front pleats.
- 9" inseam.
- "R RUSSELL" above left back pocket.
- Imported.



BLK
Black



CMT
Cement



TEAM DRIVEN MEN'S COACHES SHORT

660PMMK
92% Polyester / 8% Spandex Stretch Closed Hole Mesh

\$30.00

Sizes: S-XXL Oversize: 3XL-4XL

- Dri-Power® Moisture Wicking Fabric, keeps you dry & cool.
- Team athletic cut for generous relaxed fit.
- Elastic Waistband With Inside Quickcord, for an adjustable comfort fit.
- Side Entry Pockets, for phone & media storage.
- Back Welt Pocket With Button Closure, for secure storage.
- Side Vents, delivers additional ventilation & cooling.
- 8" inseam all sizes.
- "R RUSSELL" on right hip.
- Imported.

Decoration Type:
Screen Print, Embroidery, Twill

NOTES:
*This style runs large. We recommend ordering one size smaller than your typical size.



BLK
Black

DGR
Dark Green

GSV
Gridiron Silver

MAR
Maroon

NAV
Navy

ROY
Royal

SHL
Stealth

TRR
True Red



MEN'S WOVEN 1/4 ZIP PULLOVER

MWPRVM1
100% Polyester

\$54.00

Sizes: S-XXL
Oversize: 3XL-4XL

- Self-material cadet collar with stretch binding, providing protection from the elements.
- Reverse coil zipper at center front with logo pull.
- Set-in sleeves with stretch binding at sleeve end, for added comfort.
- Muff pocket with reverse coil zipper openings for phone & media storage.
- Silver reflective "R RUSSELL" logo at center back neck.
- Imported.

Decoration Type:
Embroidery



SHORT SLEEVE PULLOVER

872RVMK - (Adult) \$40.00
872RVBK - (Youth) \$35.00
100% Polyester Woven

Adult Sizes: S-XXL Oversize: 3XL Youth Sizes: S-XL

- Very lightweight breathability fabric.
- Moisture wicking capability.
- Full cut body with quarter zip neck to go over uniform.
- Waist has shock cord with cord lock on wearers left.
- 4 side sew label lower left front.
- "R RUSSELL" left sleeve end.
- Imported.

Decoration Type:
Embroidery, Twill



* Youth is only available in these colors



NEW

MEN'S/WOMEN'S WOVEN WARM UP JACKET

7WJQVM0 – (Men's) \$50.00
 7WJQVX0 – (Women's) \$50.00
 100% Polyester

Men's Sizes: S-XXL Oversize: 3XL- 4XL
 Women's Sizes: S-XXL

- Light Weight Stretch Woven Fabric, provides a light comfortable feel.
- Vented mesh back panels, for added ventilation & cooling.
- Imported.

Decoration Type:
 Screen Print, Embroidery



NEW

MEN'S/WOMEN'S WOVEN WARM UP PANT

7WPQVM0 – (Men's) \$45.00
 7WPQVX0 – (Women's) \$45.00
 100% Polyester

Men's Sizes: S-XXL Oversize: 3XL- 4XL
 Women's Sizes: S-XXL

- Light Weight Stretch Woven Fabric, provides a light comfortable feel.
- Zippered side pockets, for secure phone and media storage.
- Zippered leg openings, for ease of getting in and out of.
- Imported.

Decoration Type:
 Screen Print, Embroidery



Available April 2017

RUSSELL ATHLETIC PERFORMANCE SOCKS



SHOE SIZE			
SIZE	YOUTH	WOMEN'S	MEN'S
S	3Y-5Y	4-6	
M	5Y-7Y	6-10	6-9
L		10-13	9-12
XL			12-15

RUSSELL "P & R" CREW SOCK RTS01C1

\$8.50 per pair

- Colors: 57% Polyester, 26% Cotton, 10% Nylon, 6% Rubber, 1% Spandex.
- White: 54% Polyester, 28% Cotton, 12% Olefin, 5% Rubber, 1% Spandex.
- Sizes M-XL

- 12 Color offerings.
- Moisture management.
- Arch support.
- Reinforced toe.
- Mesh on top of foot for ventilation.
- Half cushion sole.
- Made in China.

Color Offering

	Black/White/Gray
	Burnt Orange/White/Black
	Cardinal/White/Black
	Dark Green/White/Black
	GT Gold/Black/White
	Maroon/White/Stealth
	Navy/White/Stealth
	Purple/White/Stealth
	Royal/White/Black
	True Red/White/Black
	Watermelon Pink/White/Stealth
	White/Stealth/Black

SHOE SIZE			
SIZE	YOUTH	WOMEN'S	MEN'S
XS	3-6		
S	5-8		
M		4-6	6-8
L		6-10	8-12
XL		11-15	12-16

COLOR OFFERING

	Black/White
	Burnt Orange/White
	Cardinal/White
	Columbia Blue/White
	Dark Green/White
	Gold/Black
	Kelly/White
	Maroon/White
	Navy/White
	Purple/White
	Royal/White
	True Red/White
	Watermelon Pink/White
	GT Gold/Black
	White/Stealth



NEW! Odor Management Technology - "Silvador™"

RUSSELL ALL SPORT SOCK RTS01A1

\$9.50 per pack

- 88% Polyester, 7% Nylon, 4% Rubber, 1% Spandex.
- 15 color offering.
- Left & right indicator on foot (All Sport Sock Only).
- Sizing on inside rim of sock.
- Moisture management.
- Arch and ankle support.
- Reinforced toe.
- Mesh on top of foot for ventilation.
- Half cushion sole.
- Sold in retail packaging in pairs; 12 pairs equal dozen.

NEW

RUSSELL CREW SOCK RTS03C2

\$18.00 per 3-pack

- 52% Polyester, 26% Cotton, 12% Olefin, 6% Nylon, 4% Spandex.
- Size M-XL.
- Moisture management.
- Arch support.
- Reinforced toe.
- Mesh on top of foot for ventilation.
- Half cushion sole.
- Retail Packaging.
- Made in the USA.



Color Offering

	Black/White
	White/Stealth

NEW



RUSSELL NO SHOW SOCK RTS03N2

\$16.00 per 3-pack

- 56% Polyester, 26% Cotton, 17% Olefin, 4% Nylon, 3% Spandex.
- Size M-XL.
- 2 color offering.
- Moisture management.
- Arch support.
- Reinforced toe.
- Mesh on top of foot for ventilation.
- Half cushion sole.
- Retail Packaging.
- Made in the USA.

Color Offering

	Black/White
	White/Stealth

NEW



RUSSELL QUARTER SOCK RTS03Q2

\$16.00 per 3-pack

- 56% Polyester, 18% Cotton, 16% Olefin, 5% Nylon, 5% Spandex.
- Size M-XL.
- 2 color offering.
- Moisture management.
- Arch support.
- Reinforced toe.
- Mesh on top of foot for ventilation.
- Half cushion sole.
- Retail Packaging.
- Made in the USA.

Color Offering

	Black/White
	White/Stealth

New Styles Available April 2017

ADULT FAUX PLACKET PULLOVER JERSEY

NEW

343VTM1 - VT Cloth

\$50.00

- 92% Nylon / 8% Spandex – Colors
- 92% Polyester / 8% Spandex - White

Adult Sizes: S-XXL

- > Faux placket pullover jersey.
- > Raglan sleeve and coverseamed armholes.
- > Curved hemmed bottom with extended tail.
- > 4 Side sew label lower left front.
- > "R RUSSELL" left sleeve.
- > Imported.

Options:

1/8" Braid around neck and down front	\$12.00
1/2" Braid around neck and down front	\$13.00
1/8" Braid 1" up from sleeve ends	\$ 8.00
1/2" Braid 1" up from sleeve end	\$ 9.00
1/2" Braid on sleeve end	\$ 9.00
1" Braid on sleeve end	\$10.00

Decoration Type: Screen Print, Embroidery, Twill

Notes: Faux placket pullover jersey – sewn placket allows for cleaner twill decoration by eliminating gapping between buttons.



BG7 Baseball Grey	BLK Black	CRD Cardinal	DGR Dark Green	MAR Maroon	NAV Navy	PUR Purple	ROY Royal	TRR True Red	WHI White
----------------------	--------------	-----------------	-------------------	---------------	-------------	---------------	--------------	-----------------	--------------

NEW

PERFORMANCE TWO BUTTON PLACKET JERSEY

3R6X2MK - X2 Cloth \$24.00
 3R6X2BK - X2 Cloth (Youth) \$22.00
 100% Polyester Interlock

Adult Sizes: S-XXL Oversize: 3XL Youth Sizes: S-XL

- Two button placket jersey with set-in sleeves.
- Self-material piping in the insert.
- HS Cloth in side and upper shoulder insert for more breathability.
- Curved hemmed bottom.
- Pad print label at inside center back neck.
- Neck taping with Russell Athletic branded.
- "R RUSSELL" left sleeve.
- Imported.

Decoration Type:

Screen Print

Notes:

Low bleed ink recommended
 10% up charge for 3XL



TWO BUTTON SOLID PLACKET JERSEY

NEW

3R7X2MK - X2 Cloth \$18.00
 3R7X2BK - X2 Cloth (Youth) \$16.00
 100% Polyester Interlock

Adult Sizes: S-XXL Oversize: 3XL Youth Sizes: S-XL

- > Moisture wicking fabric.
- > Self-material collar.
- > Two button placket with set-in sleeves.
- > Curved hemmed bottom.
- > "R RUSSELL" left sleeve logo.
- > Imported.

Options:

1/8" Braid 1" up from Sleeve End \$8.00
 1/2" Braid 1" up from Sleeve End \$9.00

Decoration Type:

Screen Print

Notes:

Low bleed ink recommended
 10% upcharge for 3XL



BG7 Baseball Grey BLK Black BOR Burnt Orange CRD Cardinal CBU Columbia Blue DGR Dark Green GLD Gold MAR Maroon NAV Navy PUR Purple ROY Royal TRR True Red WHI White

NEW

PERFORMANCE V-NECK BASEBALL JERSEY

3R8X2MK - X2 Cloth \$24.00
 3R8X2BK - X2 Cloth (Youth) \$22.00
 100% Polyester Interlock

Adult Sizes: S-XXL Oversize: 3XL Youth Sizes: S-XL

- Moisture wicking fabric.
- V-neck self-material neck.
- White Front to a color back body to give more of a custom look.
- Three-needle coverstitch on all insert seams.
- "R RUSSELL" on left sleeve.
- Imported.

Decoration Type:
 Screen Print



CORE PERFORMANCE TEE

629X2M1 - Adult
 629X2B1 - Youth
 X2 Cloth 4.1 oz./sq. yd.

\$13.50
 \$11.50

Adult Sizes: S-4XL
 Youth Sizes: S-XL

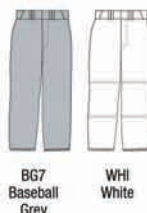
- 100% Polyester Jersey.
- Moisture wicking fabric.
- Self-material collar.
- Contrast back neck tape. (stealth on all colors)
- Set-in sleeves.
- Two-needle hemmed sleeve openings and straight bottom.
- "R RUSSELL" on left sleeve end.
- Imported.

Decoration Type:
 Embroidery, Screen Print



*AQU Aqua BLK Black *BOR Burnt Orange CBU Columbia Blue CRD Cardinal DGR Dark Green *GAT GT Gold GLD Gold MAR Maroon NAV Navy PUR Purple ROY Royal SHL Stealth STE Steel TRR True Red WHI White HZC Lime Punch

*Adult Only



DELUXE RELAXED FIT PANT

33347MK - 47 Cloth
100% Nylon Stretch Double Knit

\$85.00

Sizes: 28-42 Oversize: 44-48

- 2 1/2" deluxe elastic waistband with silicone gripper, 4 front belt loops, 3 tunnels.
- Two snap closure with brass zipper and two set-in buttoned back pockets.
- Full fit through hips, thigh and calf area.
- Double stitched crotch and double knees.
- Coverseamed back rise, side and inseams.
- Standard inseam: 37" un-hemmed. (Inseam must be specified: 20"-36")
- Price includes the cost to hem length.
- "R RUSSELL" back left hip.
- Imported.

Options:

- 1/8" Braid down sides \$ 6.00
- 1/2" Braid down sides \$10.00
- 1" Braid down sides \$12.00
- 1 1/2" Braid down sides \$15.00
- Hemmed leg end N/C
- Hemmed leg bottom with elastic N/C

NOTES:

- Fuller cut pant
- 10% Upcharge for oversize 44-48

RELAXED "DIAMOND FIT SERIES" PANT WITH MESH INSERTS

338LGMK - LG Cloth \$44.00
338LGBK - LG Cloth \$34.00
100% Stretch Polyester Double Knit

Sizes: Adult: S-XXL Oversize: 3XL Youth S-XL

- Stretch mesh inserts to allow better range of motion and breathability.
- 2 1/4" Ultra comfortable elastic waistband with silicone gripper, 4 front belt loops, 3 tunnels.
- Two snap closure with brass zipper and two set-in welted back pockets.
- Full fit through hips, thigh and calf area.
- Double stitched crotch and double knees.
- Coverseamed back rise, side and inseams.
- Hemmed boot cut.
- "R RUSSELL" back left.
- Imported.

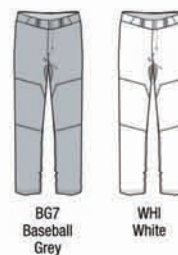
Options:

- 1/8" Braid down sides \$ 6.00
- 1/2" Braid down sides \$10.00
- 1" Braid down sides \$12.00
- 1 1/2" Braid down sides \$15.00
- Knicker Length \$ 8.00

Notes: 3XL is 10% upcharge



Adult Graded Inseams	Youth Graded Inseams
S - 31"	S - 27"
M - 32"	M - 28"
L - 33"	L - 29"
XL - 33"	XL - 30"
XXL - 34"	
3XL - 35"	





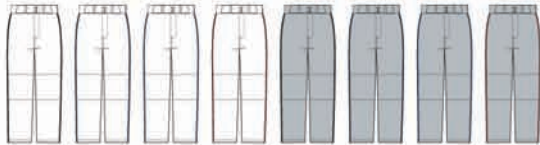
NEW

BASEBALL PIPED OPEN BOTTOM GAME PANT

233L2MK - L2 Cloth **\$30.00**
 233L2BK - L2 Cloth **\$28.00**
 100% Polyester Stretch Double Knit

Sizes: Adult: S-XXL Youth S-XL

- 2 1/2" deluxe elastic waistband with 4 front belt loops, single belt loops centered over 2 set-in back pockets and 3 tunnels.
- Concealed two snap closure with brass zipper.
- Double stitched crotch and double knees.
- Coverseamed back rise and side seams.
- Hemmed open bottom.
- Adult Standard Inseam: Size S-31", M-32", L-33", XL-33", XXL-34".
- Youth Standard Inseam: Size S-28", M-29", L-30", XL-31".
- "R RUSSELL" back left hip.
- Imported.



WBK White/ Black	WNA White/ Navy	WRO White/ Royal	WTR White/ True Red	B9B Baseball Grey/ Black	B9N Baseball Grey/ Navy	B9R Baseball Grey/ Royal	B9T Baseball Grey/ True Red
------------------------	-----------------------	------------------------	------------------------------	-----------------------------------	----------------------------------	-----------------------------------	---

BOOT CUT GAME PANT

234DBMK – DB Cloth **\$24.00**
 234DBBK – DB Cloth (Youth) **\$21.00**
 100% Polyester Double Knit

Adult Sizes: S-XXL Youth Sizes: XS-XL

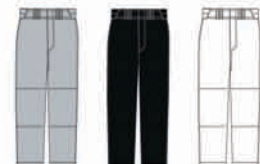
- 2 1/2" deluxe elastic waistband with 4 front belt loops, single belt loops centered over 2 set-in back pockets and 3 tunnels.
- Concealed two snap closure with brass zipper.
- Double stitched crotch and double knees.
- Coverseamed back rise and side seams.
- Hemmed boot cut.
- Adult Standard Inseam: Size S-30", M-31", L-32", XL-33", XXL-34".
- Youth Standard Inseam: Size XS-26", S-27", M-28", L-29", XL-30".
- "R RUSSELL" back left hip.
- Imported.

Options:

1/8" Braid down sides	\$ 6.00
1/2" Braid down sides	\$10.00
1" Braid down sides	\$12.00

NOTES:

Boot Cut



BG7 Baseball Grey	BLK Black	WHI White
-------------------------	--------------	--------------



BASEBALL GAME PANT

236DBMK – DB Cloth \$21.00
 236DBBK – DB Cloth – Youth \$19.00
 100% Polyester Double Knit

Adult Sizes: S-XXL
 Youth Sizes: XS-XL

- 2" deluxe elastic waistband with one set-in back pocket.
- 2 front belt loops and 3 tunnels.
- Two snap closure with brass zipper.
- Double stitched crotch and double knees.
- Coverseamed back rise.
- Elastic leg hem.
- Adult Standard Inseam: Size S-28", M-29", L-30", XL-31", XXL-32".
- Youth Standard Inseam: Size XS-24", S-25", M-26", L-27", XL-28".
- "R RUSSELL" back left hip.
- Imported.



Options:

1/8" Braid down sides \$ 6.00
 1/2" Braid down sides \$10.00
 1" Braid down sides \$12.00

SHORT SLEEVE PULLOVER

NEW

872RVMK - (Adult) \$40.00
 872RVBK - (Youth) \$35.00
 100% Polyester Woven

Adult Sizes: S-XXL Oversize: 3XL Youth Sizes: S-XL

- Very lightweight breathability fabric.
- Moisture wicking capability.
- Full cut body with quarter zip neck to go over uniform.
- Waist has shock cord with cord lock on wearers left.
- 4 side sew label lower left front.
- "R RUSSELL" left sleeve end.
- Imported.

Decoration Type:
 Embroidery, Twill



* Youth is only available in these colors

ADJUSTABLE BASEBALL BELT

BBBELTA (Adult)	\$7.00
BBBELTY (Youth)	\$7.00

Sizes: OSFA; Adjustable 32"-46" (Adult)
 Sizes: OSFA; Adjustable 18"-32" (Youth)



- 1 1/2" Wide elastic belt.
- Metal adjustable slide.
- Metal buckle.
- Coated split leather tab.
- "R RUSSELL" embossed on tab.
- Imported.

Notes:

Replaces the BBBELT0.
 Reduced width for a better fit on youth baseball pants.



"R" Russell logo color is tonal as shown in image

NEW

WOMEN'S STRETCH FAUX BUTTON FRONT JERSEY

737VTX1 - VT Cloth \$44.00
 92% Nylon / 8% Spandex - Colors
 92% Polyester / 8% Spandex - White

Sizes: S-XXL

- Faux placket pullover jersey with raglan sleeves.
- Dri-Power® moisture wicking fabric.
- Modified sleeve length.
- Tapered waist and curved hemmed bottom.
- Back panel wraps to front with no side seam.
- 4 Side sew label lower left front.
- "R RUSSELL" logo left sleeve.
- Imported.

Options:

1/8" Braid around neck and down front	\$12.00
1/2" Braid around neck and down front	\$13.00
1/8" Braid 1" up from sleeve ends	\$ 8.00
1/2" Braid 1" up from sleeve ends	\$ 9.00
1/2" Braid on sleeve end	\$ 9.00

Decoration Type:

Screen Print, Embroidery, Twill

Notes:

Updated sleeve length for freedom of movement.
 Faux placket pullover jersey – sewn placket allows for cleaner twill decoration by eliminating gapping between buttons.



COLORS



BG7 Baseball Grey BLK Black CRD Cardinal DGR Dark Green MAR Maroon NAV Navy PUR Purple ROY Royal TRR True Red WHI White

NEW

WOMEN'S 2-BUTTON COLOR BLOCK JERSEY

7R6X2XK - X2 Cloth
100% Polyester Interlock

\$20.00

Sizes: S-XXL

- Two button placket jersey with set-in sleeves.
- Self-material piping in the insert.
- HS Cloth in side and upper shoulder insert for more breathability.
- Curved hemmed bottom.
- Pad print label at inside center back neck.
- Neck taping with Russell Athletic branded.
- "R RUSSELL" left sleeve.
- Imported.

Decoration Type:

Screen Print

Notes:

Low bleed ink recommended.



COLORS



- | | | | | | | | | | | |
|--------------------------------|---------------------------------------|--|-----------------------------------|-------------------------------------|-------------------------------|---------------------------------|-------------------------------|---------------------------------|--------------------------------|-----------------------------------|
| B9A
Black/
Baseball Grey | B9O
Burnt Orange/
Baseball Grey | C9C
Columbia Blue/
Baseball Grey | C9A
Cardinal/
Baseball Grey | D9B
Dark Green/
Baseball Grey | G9L
Gold/
Baseball Grey | M9B
Maroon/
Baseball Grey | N9B
Navy/
Baseball Grey | P9B
Purple/
Baseball Grey | R9B
Royal/
Baseball Grey | T9B
True Red/
Baseball Grey |
|--------------------------------|---------------------------------------|--|-----------------------------------|-------------------------------------|-------------------------------|---------------------------------|-------------------------------|---------------------------------|--------------------------------|-----------------------------------|

NEW

PERFORMANCE V-NECK SOFTBALL JERSEY

7R8X2XK – X2 Cloth \$20.00
 7R8X2GK – X2 Cloth (Youth) \$18.00
 100% Polyester Interlock

Sizes: S-XXL Youth Sizes: S-XL

- Moisture wicking fabric.
- V-neck self-material neck.
- White front to a color back body to give more of a custom look.
- Russell Athletic logo in neck taping.
- "R RUSSELL" on left sleeve.
- Imported.

Decoration Type:

Screen Print



COLORS



WBK White/Black	WBG White/ Burnt Orange	WCA White/Cardinal	WDG White/Dark Green	WHM Maroon/White	WNA White/Navy	WPU White/Purple	WRO White/Royal	WTR White/True Red
---------------------------	--------------------------------------	------------------------------	--------------------------------	----------------------------	--------------------------	----------------------------	---------------------------	------------------------------



BACK VIEW



SIDE VIEW



BG7
Baseball Grey

BLK
Black

NAV
Navy

WHI
White

WOMEN'S LOW RISE KNICKER "DIAMOND FIT SERIES" PANT

738LGXK - LG Cloth

\$40.00

Sizes: XS-XXL

- Mesh inserts for breathability and better range of motion during play.
- Two set-in rear pockets with zipper closure.
- Low rise to hit 2" below the natural waist.
- Stretch elastic waistband for better movement and silicone gripper to keep your jersey in.
- Shaped with belt loops.
- Two snap closure with brass zipper.
- Two set-in rear pockets with zipper closure.
- Double knees.
- Open bottom pant hemmed leg opening.
- Graded Inseam: XS-17", S-18", M-19", L-20", XL-21", XXL-22".
- "R RUSSELL" logo back left.
- Imported.

Options:

- 1/8" Braid down sides \$ 6.00
- 1/2" Braid down sides \$10.00
- 1" Braid down sides \$12.00

WOMEN'S LOW RISE KNICKER LENGTH PANT

7S4DBXK - DB Cloth

\$32.00

100% Polyester Double Knit

Sizes: XS-XXL

- Low rise to hit 2" below the natural waist.
- Elastic waistband with shaped belt loops.
- Two single welt rear pockets.
- Two snap closure with brass zipper.
- Double knees extending to bottom opening.
- Elastic hemmed leg opening.
- Inseam length designed to hit under the knee.
- Standard Inseam: XS- 17", S- 18", M- 19", L- 20", XL- 21", XXL- 22".
- "R RUSSELL" logo back left hip.
- Imported.

Options:

- 1/8" Braid down side seam \$ 6.00
- 1/2" Braid down side seam \$10.00
- 1" Braid down the side seam \$12.00
- 1 1/2" Braid down the side seam \$15.00

Notes:

Pant will hook-up to most jerseys.



BG7
Baseball Grey

BLK
Black

NAV
Navy

WHI
White



GIRLS LOW RISE KNICKER LENGTH PANT WITH BELT LOOPS

7S3DBGK - DB Cloth (Girls)
100% Polyester Double Knit

\$23.50

Girls Sizes: S-L

- Low rise to hit 2" below the natural waist.
- Elastic waistband with belt loops and one single welt rear pocket.
- Two snap closure with brass zipper.
- Double knees extending to bottom opening.
- Elastic hemmed leg opening.
- Inseam length designed to hit under the knee.
- Standard Inseam: S-L: 17".
- "R RUSSELL" logo back left hip.
- Imported.

Options:

1/8" Braid down side seam	\$ 6.00
1/2" Braid down side seam	\$10.00
1" Braid down the side seam	\$12.00

Notes:

Pant has one welt rear pocket on left and drawcord in elastic waistband.



BG7 Baseball Grey BLK Black NAV Navy WHI White

SHORT SLEEVE PULLOVER

NEW

872RVMK - RV Cloth
872RVBK - RV Cloth (Youth)
100% Polyester Woven

\$40.00
\$35.00

Adult Sizes: S-XXL Oversize: 3XL Youth Sizes: S-XL

- Very lightweight breathability fabric.
- Moisture wicking capability.
- Full cut body with quarter zip neck to go over uniform.
- Waist has shock cord with cord lock on wearer's left.
- 4 side sew label lower left front.
- "R RUSSELL" left sleeve end.
- Imported.

Decoration Type:

Embroidery, Twill



* Youth is only available in these colors



NEW

ADULT SOLID JERSEY WITH SIDE INSERTS

S8693M1 - 93 Cloth **\$35.00**
 100% Nylon Tricot Mesh-Colors
 100% Polyester Tricot Mesh-White

Sizes: S-XXL Oversize: 3XL

- 93 Cloth mesh jersey that combines strength and comfort.
- Reinforced 73 Cloth yoke for added durability in contact areas.
- Skill cut 73 Cloth sleeves for complete pad coverage.
- Side and Under sleeve 69 Cloth insert for tailored fit.
- Imported.

Notes:

Belt Length **\$4.00**
 Youth equivalent: S8693W1



ADULT STRETCH MESH GAME JERSEY

S05SMMK - SM Cloth **\$63.00**
 90% Nylon / 10% Spandex-Colors
 90% Polyester / 10% Spandex-White

Sizes: S-XXL Oversize: 3XL

- Durable, compression fit stretch mesh delivers unrestricted range of motion.
- Reinforced 73 cloth yoke for added durability in contact area.
- Skill cut 73 Cloth sleeves for complete pad coverage.
- Imported.

Notes:

Belt Length **\$4.00**



ADULT COLOR BLOCK GAME JERSEY

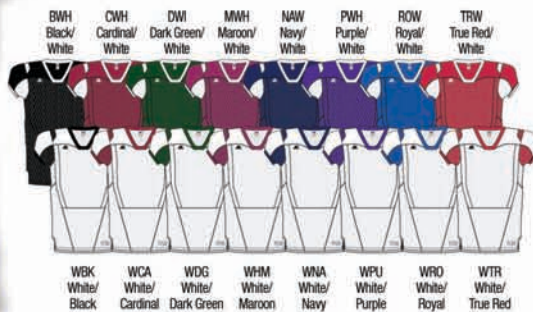
S6793MK - 93 Cloth **\$54.00**
 100% Nylon Tricot Mesh-Colors
 100% Polyester Tricot Mesh-White

Sizes: S-XXL Oversize: 3XL

- 93 Cloth jersey that combines strength and comfort.
- Reinforced 73 Cloth yoke for added durability in contact areas.
- Skill cut 73 Cloth sleeves for complete pad coverage.
- Neck design for added air flow and style.
- Imported.

Notes:

Belt Length **\$4.00**
 Youth Equivalent: **S8693W1**





ADULT COLOR BLOCK GAME JERSEY

S57Z7MK - Z7 Cloth "HOME JERSEY" \$79.50
S57Z7M1 - Z7 Cloth "AWAY JERSEY" \$79.50
 88% Nylon / 12% Spandex-Colors
 88% Polyester / 12% Spandex-White

Sizes: S-XXL Oversize: 3XL

- Exclusive Z7 cloth delivers the lightest, strongest, most durable engineered football Jersey.
- Built in fabric technology helps to resist stains and wick moisture.
- Reinforced 73 cloth yoke for added durability in contact area.
- Front, back and side Z7 Cloth inserts provide superior ventilation.
- Imported.

S57Z7MK - "Home Jersey" Colored Body with White Neck, Cuffs and Piping



S57Z7M1 - "Away Jersey" White Body with Contrast Sleeves, Neck, Cuffs and Piping



Notes:
 Belt Length

\$4.00

ADULT COLOR BLOCK GAME JERSEY

S65XCMK - XC Cloth \$79.50
 86% Nylon / 14% Spandex-Colors
 87% Polyester / 13% Spandex-White

Sizes: S-XXL Oversize: 3XL

- Xtreme Compression cloth is full compression, designed to lock in shoulder pads, be tight to the chest and provide maximum mobility.
- Z7 front, back and side inserts provide superior ventilation.
- Reinforced XC yoke for added durability in contact area, without sacrificing compression.
- Imported.

Notes:
 Belt Length

\$4.00



STOCK PRACTICE JERSEY

S096BMK - 6B Cloth

\$16.50

Sizes: Adult M, XL Oversize: 3XL

- Mini porthole mesh body.
- Medium weight dazzle warp knit sleeves and double ply yoke.
- 1" Crossover rib knit V-neck.
- Imported.



Notes:

Decoration: Screen Print Only





ADULT GAME PANT WITH CONTRASTING SIDE / FRONT INSERTS

F65XPMK - XP Cloth (No Fly) \$63.00

Sizes: XS-XXL Oversize: 3XL

- Lightweight Xtreme Power performance pant is designed for max range of motion, comfort and durability.
- Z7 Cloth Upper inseam & side inserts for superior ventilation.
- 2 1/2" elastic waist with gripper technology keeps the jersey tucked.
- Envelope thigh and knee pad pockets.
- Imported.

Options:

1 1/2" FBC73M1 belt inserted & bar tacked \$15.00

Decoration Type: Embroidery, Twill

ADULT DELUXE GAME PANT

F25XPMF - XP Cloth (No Fly) \$58.50

82% Nylon / 18% Spandex-Colors
82% Polyester / 18% Spandex-White

Sizes: XS-2XL Oversize: 3XL

- Lightweight Xtreme Power performance pant is designed for max range of motion, comfort and durability.
- 2 1/2" elastic waist with gripper technology keeps the jersey tucked.
- Envelope thigh and knee pad system holds pads firmly in place.
- Imported.

Options:

1" Side braid \$ 6.00
1 1/2" Side braid \$ 6.50
1 1/2" FBC73M1 belt inserted & bar tacked \$15.00

Decoration Type: Embroidery, Twill



ADULT DELUXE GAME PANT

F2562MF - 62 Cloth (No Fly) \$45.00

92% Nylon / 8% Spandex-Colors
92% Polyester / 8% Spandex-White

Sizes: XS-2XL Oversize: 3XL

- Performance pant delivers full range of motion, comfort and durability.
- 2 1/2" elastic waist with gripper technology keeps the jersey tucked.
- Envelope thigh and knee pad system holds pads firmly in place.
- Imported.

Options:

1" Side braid \$ 6.00
1 1/2" Side braid \$ 6.50
1 1/2" FBC73M1 belt inserted & bar tacked \$15.00

Decoration Type: Embroidery, Twill





ADULT INTEGRATED 7 PIECE PAD PANT

F25PFMP -PF Cloth (No Fly)
100% Polyester Double Knit

\$33.50

Sizes: S-XL

- 7 piece integrated pad set includes:
- Ventilated hip and spine pads.
- Reinforced thigh pads.
- Contoured knee pads.
- 1" web belt inserted and bar tacked.
- Imported.

Options and Decoration:

Not available



PRACTICE PANT

F25PFMF - PF Cloth (No Fly w/ concealed slots)
100% Polyester Double Knit

\$18.50

Sizes: XS-2XL Oversize: 3XL-4XL

- Polyester double knit body.
- 2 1/2" Elastic tunnel waist with concealed slots.
- Envelope thigh and knee pad pockets.
- Imported.

Options:

1" Side braid	\$6.00
1 1/2" Side braid	\$6.50

Decoration Type:

Embroidery/Twill

Notes:

Youth equivalent: F25PFWF





NEW YOUTH SOLID JERSEY WITH SIDE INSERTS

S8693W1 - 93 Cloth \$26.00
 100% Nylon Tricot Mesh-Colors
 100% Polyester Tricot Mesh-White

Sizes: S-XXL

- 93 Cloth mesh jersey that combines strength and comfort.
- Reinforced 73 Cloth yoke for added durability in contact areas.
- Skill cut 73 Cloth sleeves for complete pad coverage.
- Side and Under sleeve 69 Cloth insert for tailored fit.
- Imported.



Notes:

Belt Length \$4.00
 Adult Stock - **S8693M1**

YOUTH COLOR BLOCK GAME JERSEY

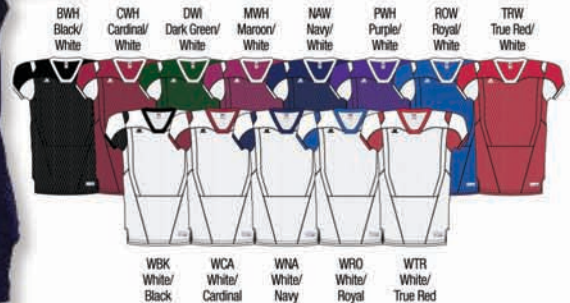
S67AHWK - AH Cloth \$34.50
 100% Nylon Tricot Mesh-Colors
 100% Polyester Tricot Mesh-White

Sizes: S-2XL Oversize: 3XL

- Lightweight jersey constructed for mobility and comfort.
- Reinforced AZ Cloth yoke for added durability in contact areas.
- Skill cut AZ Cloth sleeves for complete pad coverage.
- Imported.

Notes:

Belt Length \$4.00
 Adult Stock - **S6793MK**



YOUTH COLOR BLOCK GAME JERSEY

S68AHWK - AH Cloth \$34.50
 100% Nylon Tricot Mesh-Colors
 100% Polyester Tricot Mesh-White

Sizes: S-XXL Oversize: 3XL

- Lightweight jersey constructed for mobility and comfort.
- Reinforced AZ Cloth yoke for added durability in comfort areas.
- Skill cut AZ Cloth sleeves for complete pad coverage.
- Imported.

Notes:

Belt Length \$4.00





YOUTH STOCK PRACTICE JERSEY

S096BWK - 6B Cloth

\$14.00

Sizes: M, XL

- Mini porthole mesh body.
- Medium weight dazzle warp knit sleeves and double ply yoke.
- 1" Crossover rib knit V-neck.
- Imported.

Decoration Placements: 1, 2A, 2B, 3, 6, 7, 9C, SV, YL

Notes: Decoration: Screen Print Only



YOUTH DELUXE GAME PANT

F2569WK - 69 Cloth

\$29.00

87% Nylon / 13% Spandex-Colors
84% Polyester / 16% Spandex-White

Sizes: XS-2XL

- 69 Cloth offers durability and range of motion.
- 2" Elastic tunnel waist.
- Envelope Thigh and knee pad system holds pads firmly in place.
- Imported.

Options:

Slotted waist (10 slots)	\$6.00
1" Side braid	\$6.00
1 1/2" Side braid	\$6.50

Decoration Type: Embroidery, Twill

Notes: Adult equivalent: F2562MF

YOUTH INTEGRATED 7 PIECE PAD PANT

F25PFWP - PF Cloth (No Fly)
100% Polyester Double Knit

\$27.00

Sizes: XS-2XL

- 7 piece integrated pad set includes:
- Ventilated hip and spine pads.
- Reinforced thigh pads.
- Contoured knee pads.
- 1" Web belt inserted and bar tacked.
- Imported.

Options: Not Available



PRODUCT



SCRIMMAGE VEST

12756MH - 56 Cloth \$12.00
 100% Nylon Stretch Porthole Mesh

Sizes: One size fits all

- Vest body (56 Cloth).
- Trimmed neck, armhole and bottom.
- Imported.

Options:
 Not Available



PRODUCT



MESH LAUNDRY BAG

MLB6601 - 66 Cloth \$14.50
 100% Polyester Porthole Mesh

Sizes: 24"x36"

- Bag body (66 Cloth).
- Drawstring with lace lock.
- Imported.

Decoration Type:
 Screen Print



PRODUCT



1 1/2" COVERED BELT

FBC73MK - 73 Cloth \$9.00
 100% Nylon Dazzle Warp Knit - Colors
 100% Polyester Dazzle Warp Knit - White

Sizes: M, XL Oversize: 3XL

- Cloth covered web belt (73 Cloth).
- D-rings.
- Imported.



PRODUCT

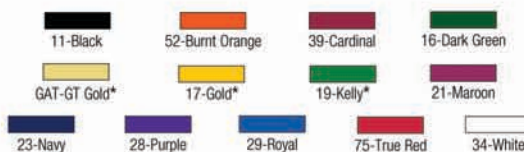


STRAIGHT NAMEPLATE

NMP73MK - 73 Cloth \$8.50
 100% Nylon Warp Knit - Colors
 100% Polyester Warp Knit - White

Sizes: 4"x18"

- 73 Cloth.
- Crocheted.
- Single ply.
- Reinforced interfacing.
- Imported.



*Inventory only



1. STRONGER EXOSKELETON

The lightweight exoskeleton is constructed with 10 layers of 100% aerospace grade carbon fiber reducing the avg force felt by 60% compared to competing pads.

2. COMPRESSION VEST

Holds the padding close to the body for maximum range of motion and is machine washable. (Pictured with extended vest)

3. OS TECHNOLOGY

Automotive grade, dual density foam provides better impact mgmt and can be used without the exoskeleton for non-contact days.

4. MILITARY GRADE BUCKLE SYSTEM

Provides a secure fit without adding unnecessary bulk.

5. ENHANCED RANGE OF MOTION

The front exoskeleton is a seamless design that conforms to the body allowing for better tuck, stretch and lift.

6. IMPROVED PROTECTION

The entire exoskeleton is one cohesive piece for complete coverage and remains 20% lighter than competing pads.

CARBONTEK GEN II

X11PSCC - Full System	\$500
X00PVCC - OST Padded Vest	\$125
Adult Sizes: S-3XL	

STRONGER. LIGHTER. FASTER.



ADULT / YOUTH 5-PC INTEGRATED GIRDLE

RAIGR4 – Adult	CLR: GSV	\$34.50
RYIGR4 – Youth	CLR: GSV	\$32.50

83% Polyester / 17% Spandex

Adult Sizes: S-4XL Youth Sizes: S-XL

- Strategically placed protective padding in key contact areas including thighs, hips and tail bone.
- Lightweight, breathable, moisture-wicking fabric keeps you cool and dry.
- Cup pocket included.
- Plush RUSSELL waistband for comfort.
- Imported.

MEN'S ATHLETIC CUT GAME JERSEY

3B5VHMK - VH Cloth **\$45.00**

- 72% Nylon / 28% Spandex – Colors
- 72% Polyester / 28% Spandex – White

Sizes: S – XXL

- Moisture wicking fabric.
- Athletic cut jersey.
- V neck with piping.
- Piping at armholes and down side panels.
- Braid down center panel.
- Straight hemmed bottom.
- 4-side sew label on lower left front.
- "R Russell" logo on right chest.
- Imported.

Decoration Type: Screen Print, Twill, Embroidery

NOTES:

Stock short hook-up: 3B6VHMK

MEN'S ATHLETIC CUT SHORT

3B6VHMK – VH Cloth **\$45.00**

- 72% Nylon / 28% Spandex – Colors
- 72% Polyester / 28% Spandex – White

Sizes: S – XXL

- Moisture wicking fabric.
- Athletic cut short.
- 2" elastic with silicone and inserted drawcord.
- Piping on side panels.
- Braid down center of panel.
- 10" inseam.
- "R Russell" logo on left leg.
- Imported.

Decoration Type: Screen Print, Twill, Embroidery

NOTES:

Stock jersey hook-up: 3B5VHMK

Dri-POWER®



SIDE VIEW



BACK VIEW



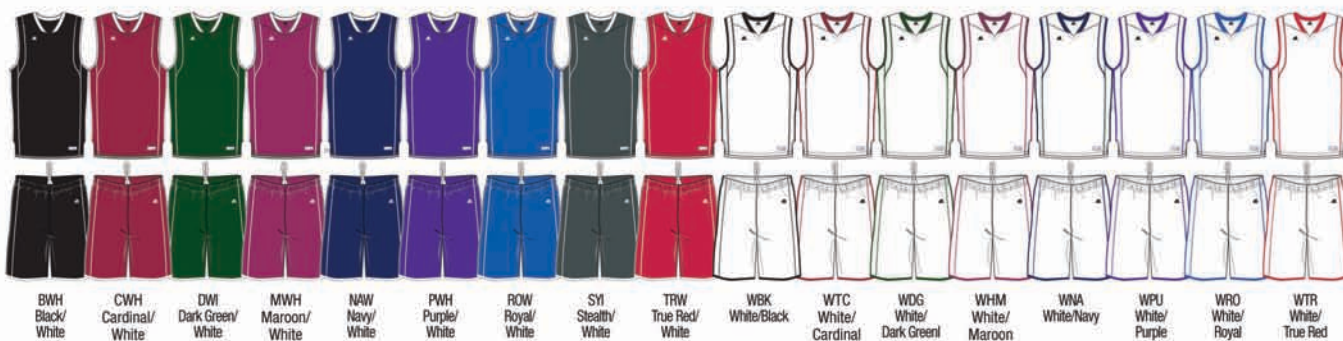
ATHLETIC CUT



Conforms to NFHS
Uniform Design Specifications

* NFHS approval is for the base uniform design – it does not include lettering, numbering or other adornment.

COLORS



MEN'S GAME JERSEY

2B7DPMK – DP Cloth
- 100% Polyester

\$32.50

Dri-POWER®

Sizes: S – XXL

- Moisture wicking fabric.
- Mid-Fit Jersey.
- Contrasting arm and side inserts.
- Back panel inserts.
- Straight hemmed bottom.
- 4-side sew label on lower left front.
- Imported.

Decoration Type: Screen Print, Twill, Embroidery

NOTES:

Stock short hook-up: 2B8DPMK

MEN'S SHORT

2B8DPMK – DP Cloth
- 100% Polyester

\$32.50

Sizes: S – XXL

- Moisture wicking fabric.
- Athletic cut short.
- 2" multi-needle elastic waist with drawcord.
- Side and back leg panels.
- Side inserts.
- 10" inseam.
- "R Russell" logo on left hip.
- Imported.

Decoration Type: Screen Print, Twill, Embroidery

NOTES:

Stock jersey hook-up: 2B7DPMK



MID-FIT



Conforms to NFHS
Uniform Design Specifications

*NFHS approval is for the base uniform design - It does not include lettering, numbering or other adornment.

COLORS



BWH Black/ White	CWH Cardinal/ White	DW Dark Green/ White	MWH Maroon/ White	NAW Navy/ White	PWH Purple/ White	ROW Royal/ White	TRW True Red/ White	WBK White/ Black	WCA White/ Cardinal	WDG White/ Dark Green	WHM White/ Maroon	WNA White/ Navy	WPU White/ Purple	WRO White/ Royal	WTR White/ True Red
------------------------	---------------------------	----------------------------	-------------------------	-----------------------	-------------------------	------------------------	---------------------------	------------------------	---------------------------	-----------------------------	-------------------------	-----------------------	-------------------------	------------------------	---------------------------

WOMEN'S SEMI-RACERBACK GAME JERSEY

3B5VHXX - VH Cloth **\$45.00**
 72% Nylon / 28% Spandex – Colors
 72% Polyester / 28% Spandex – White

Sizes: S – XXL

- Moisture wicking fabric.
- Semi-Racerback design jersey.
- V-neck with piping.
- Contrasting side panel.
- Piping at armholes and down side panels.
- Braid down center panel.
- Straight hemmed bottom.
- 4-side sew label on lower left front.
- Imported.

Decoration Type: Screen Print, Twill, Embroidery

NOTES: Stock short hook-up: 3B6VHXX

WOMEN'S FULL COVERAGE STOCK SHORT

3B6VHXX - VH Cloth **\$45.00**
 72% Nylon / 28% Spandex – Colors
 72% Polyester / 28% Spandex – White

Sizes: S – XXL

- Moisture wicking fabric.
- Full coverage cut short.
- 2" multi-needle waist with drawstring.
- Piping on side panels.
- Braid down center of panel.
- 8" inseam.
- "R Russell" logo on left leg.
- Imported.

Decoration Type: Screen Print, Twill, Embroidery

NOTES: Stock jersey hook-up: 3B5VHXX



SIDE VIEW



BACK VIEW



Conforms to NFHS
Uniform Design Specifications

* NFHS approval is for the base uniform design – it does not include lettering, numbering or other adornment.

COLORS



WOMEN'S FULL COVERAGE GAME JERSEY

2B7DPXK – DP Cloth
100% Polyester

\$32.50

Sizes: S – XXL

- Moisture wicking fabric.
- Full coverage jersey.
- Self-material faced V- neck.
- Contrasting arm and side inserts.
- Back panel inserts.
- Straight hemmed bottom.
- 4-side sew label on lower left front.
- Imported.

Decoration Type: Screen Print, Twill, Embroidery

NOTES: Stock short hook-up 2B8DPXK

WOMEN'S PANEL STOCK SHORT

2B8DPXK – DP Fabric
100% Polyester

\$32.50

Sizes: S-XXL

- Moisture wicking fabric.
- 2" multi-needle waist with drawstring.
- Full coverage cut.
- Side panel with insert.
- Upper back insert.
- Cover seam rises.
- Straight hemmed bottom.
- 8" standard inseam.
- Imported.

Decoration Type: Screen Print, Twill, Embroidery

NOTES:

Stock jersey hook-up: 2B7DPXK
10% upcharge for 3XL; 20% upcharge for 4XL



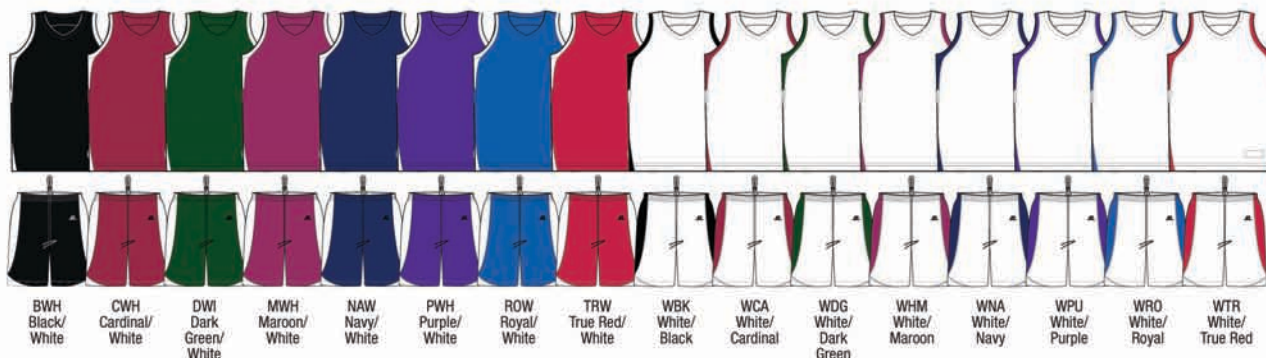
Conforms to NFHS
Uniform Design Specifications



FULL COVERAGE

* NFHS approval is for the base uniform design – it does not include lettering, numbering or other adornment.

COLORS



REVERSIBLE PRACTICE JERSEY

7M2AFMK – Men's AF Cloth \$17.00
7M2AFBK – Youth AF Cloth \$15.00
 100% Nylon – Colors
 100% Polyester – White

Sizes: Adult: S – XXL Youth: S – XL

- Concealed U-neck and armholes.
- Reverses to white.
- Opened bottom to allow for printing.
- Straight hemmed bottom.
- 4-side sew label on lower left front.
- Imported.

Decoration Type: Screen Print



WOMEN'S REVERSIBLE PRACTICE JERSEY

7W2AFXK - AF Cloth \$17.00
 100% Nylon – Colors
 100% Polyester – White

Sizes: S – XXL

- Concealed V-neck and armholes.
- Reverses to white.
- Opened bottom to allow for printing.
- Straight hemmed bottom.
- Imported.

Decoration Type: Screen Print



MEN'S 9" POLYESTER TRICOT MESH SHORT

659AFMK - AF Cloth (Adult) **\$13.50**
 659AFB0 - AF Cloth (Youth) **\$13.00**
 100% Polyester Tricot Mesh

Adult Sizes: S-XXL Oversize: 3XL-4XL
 Youth Sizes: S-XL

- Team Athletic Cut.
- Solid tricot lined body.
- Two-needle hemmed leg openings.
- 9" inseam adult.
- 7" inseam youth.
- "R RUSSELL" on upper right hip.
- Imported.

Decoration Type:
 Screen Print, Embroidery

Notes:
 White offered in S-XXL only



Dri-POWER®



Dri-POWER®

7" TRICOT MESH SHORT

7M7AFMK - AF Cloth **\$13.00**
 100% Polyester

Sizes: S-XXL Oversize: 3XL

- Multi-needle waist with quickcord.
- Lightweight tricot liner.
- Straight hemmed bottom.
- 7" inseam.
- "R RUSSELL" logo on upper right hip.
- Imported.

Decoration Type:
 Screen Print, Embroidery, Twill

Notes:
 9" inseam - 659AFMK





NEW

SHORTSLEEVE VOLLEYBALL JERSEY

1V5X2XK - X2 Cloth
100% Polyester

\$25.00

Sizes: XS-XXL

- Lightweight stretch fabric delivers comfort and durability.
- Set-in sleeves for max range of motion.
- Upper back and side mesh inserts keep the player cool and dry.
- Contrast white piping for a clean, professional look.
- Round Neck for style.

Decoration Type:
Screen Print

Notes:

Tight Hook-up, 2V372XK (3" inseam)
Tight Hook-up, 2V572XK (5" inseam)

Available June 2017



LONGSLEEVE VOLLEYBALL JERSEY

NEW

1V6X2XK - X2 Cloth
100% Polyester

\$30.00

Sizes: XS-XXL

- Lightweight stretch fabric delivers comfort and durability.
- Set-in sleeves for max range of motion.
- Upper back and side mesh inserts keep the player cool and dry.
- Contrast white piping for a clean, professional look.
- Round Neck for style.

Decoration Type:
Screen Print

Notes:

Tight Hook-up, 2V372XK (3" inseam)
Tight Hook-up, 2V572XK (5" inseam)

Available June 2017





BLK Black CRD Cardinal DGR Dark Green GSV Gridiron Silver



MAR Maroon NAV Navy PUR Purple



ROY Royal TRR True Red WHI White

WOMEN'S STOCK VOLLEYBALL CAP SLEEVE V-NECK TEE

7P8S2XK - S2 Cloth (Adult) \$22.00
 94% Nylon / 6% Spandex Stretch Knit - Colors
 91% Polyester / 9% Spandex Stretch Knit - White

Sizes: XS-XXL

- > Moisture wicking fabric.
- > Self-material V-neck.
- > Compression body and sleeve.
- > Flat-lock seamed construction reduces abrasion.
- > Two-needle cover stitch hemmed sleeves and bottom.
- > "R RUSSELL" on right upper front chest.
- > "R RUSSELL" jock tag lower left front.
- > Imported.

Decoration Type:
 Screen Print

LOW RISE TIGHT

2V372XK - 72 Cloth (3" inseam)
2V572XK - 72 Cloth (5" inseam)
 90% Nylon / 10% Spandex - Colors

\$23.50
 \$27.00

Sizes: XS-XXL

- > Low rise design.
- > 1" flat elastic waistband.
- > New back seam for comfort fit.
- > Gusset with lining.
- > 3 or 5" finished inseam.
- > "R Russell" logo at lower right front .

Decoration Placements:
 N/A



Back View



BLK Black NAV Navy

LOW RISE TIGHT

2V572XK - 72 Cloth (5" inseam) \$27.00
 90% Nylon / 10% Spandex - Colors
 90% Polyester / 10% Spandex - White

Sizes: XS-XXL

- > Low rise design.
- > 1" flat elastic waistband.
- > Back seam for comfort fit.
- > Gusset with lining.
- > 5" finished inseam.
- > "R Russell" logo at lower right front .

Decoration Placements:
 N/A



Back View



BLK Black NAV Navy

SIZE CHARTS

MEN'S SIZE CHART

Alpha Size	X-Small	Small	Medium	Large	1X-Large	2X-Large	3X-Large	4X-Large	5X-Large
Chest	30 - 32	34 - 36	38 - 40	42 - 44	46 - 48	50 - 52	54 - 56	58 - 60	62 - 64
Waist	24 - 26	28 - 30	32 - 34	36 - 38	40 - 42	44 - 46	48 - 50	52 - 54	56 - 58

MEN'S TALL SIZE CHART

	LT	XLT	2XT	3XT
Chest	42 - 44	46 - 48	50 - 52	54 - 56
Waist	36 - 38	40 - 42	44 - 46	48 - 50

YOUTH SIZE CHART

Alpha Size	X-Small	Small	Medium	Large	1X-Large	2X-Large
Chest	24 1/2 - 26	26 1/2 - 28	28 1/2 - 30	30 1/2 - 33	33 1/2 - 36	36 1/2 - 39
Waist	20 1/2 - 22	22 1/2 - 24	24 1/2 - 26	26 1/2 - 29	29 1/2 - 32	32 1/2 - 35

WOMEN'S SIZE CHART

Alpha Size	X-Small	Small	Medium	Large	1X-Large	2X-Large	3X-Large	4X-Large	5X-Large
Bust	31 1/2 - 33	33 1/2 - 35	35 1/2 - 37	37 1/2 - 40	40 1/2 - 43	43 1/2 - 46	46 1/2 - 50	50 1/2 - 54	54 1/2 - 58
Waist	23 1/2 - 25	25 1/2 - 27	27 1/2 - 29	29 1/2 - 32	32 1/2 - 35	35 1/2 - 38	38 1/2 - 42	42 1/2 - 46	46 1/2 - 50
Hips	33 1/2 - 35	35 1/2 - 37	37 1/2 - 39	39 1/2 - 42	42 1/2 - 45	45 1/2 - 48	48 1/2 - 52	52 1/2 - 56	56 1/2 - 60

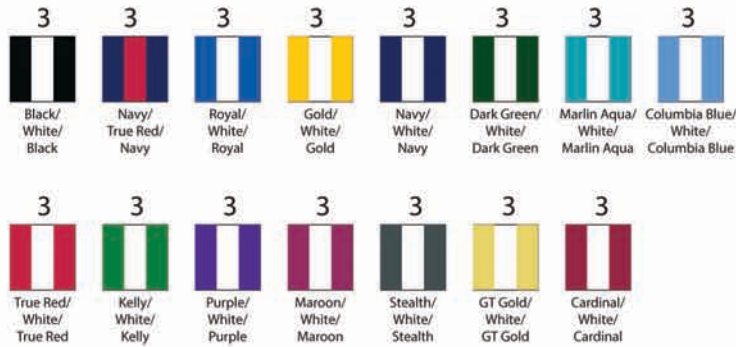
GIRL'S SIZE CHART

Alpha Size	S (7-8)	M (10-12)	L (14-16)	XL (18)
Bust	25 1/2 - 27 1/2	28 - 30 1/2	31 - 33 1/2	34-35
Waist	22 1/2 - 23 1/2	24 - 25 1/2	26 - 27 1/2	28 - 28 1/2
Hips	27 1/2 - 29	29 1/2 - 32 1/2	33 - 36 1/2	37 - 38 1/2

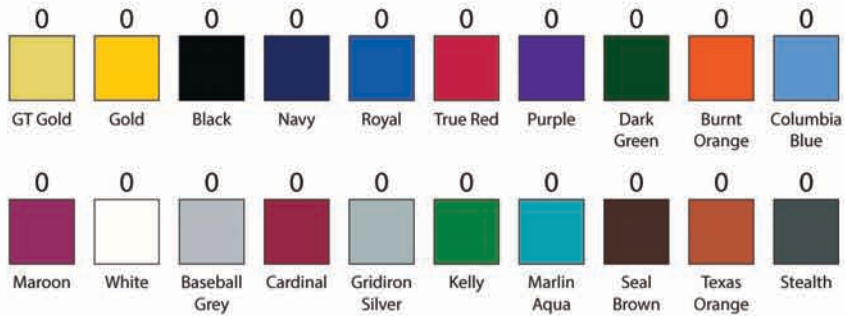
NOTE: The measurements listed in the above charts are body measurements. Any person on the upper limits of these measurements should consider ordering the next size. Inseam measurements should always be specified on warmup pant orders. When no specific measurements are listed or the term AVERAGE INSEAMS is written, you will receive inseam lengths as listed on the charts above.

STOCK BRAID/TRIM

1" AND 1/2" 102 BRAID PATTERN



1" AND 1/2" 102 BRAID PATTERN



1/8" AND 1/2" 106 BRAID PATTERN



FABRICS OFFERED

Fabric Description

Fabric #	Description
68	Porthole Mesh. 100% Bright Polyester-Colors & White 5.6 oz/sq yd.
47	Heavyweight Stretch Double Knit. 100% Nylon-Whites & Colors 8.8 oz/sq yd.
53	Engineered Pinstripe Warp Knit. 100% Polyester. 8.0 oz/sq yd.
56	Porthole Mesh. 100% Nylon. 3.1 oz/sq yd.
62	Stretch Warp Knit. 92% Nylon/8% Spandex-Colors, 92% Polyester/8% Spandex-White. 8.5 oz/sq yd.
69	Stretch Warp Knit. 87% Nylon/13% Spandex- Colors, 84% Polyester/16% Spandex-Whites. 6.5 oz/sq yd.
72	Dri-Power Stretch Jersey. 90% Nylon/10% Spandex-Colors, 7.2 oz/sq yd. 91% Polyester/9% Spandex-Whites, 7.2 oz/sq yd.
73	Bright Dazzle Warp Knit. 100% Nylon-Colors, 100% Polyester-Whites, 7.0 oz/sq yd.
93	Bright Medium Weight Tricot Mesh. 100% Nylon-Colors, 100% Polyester, 5.5 oz/sq yd.
AH	Bright Medium Weight Tricot Mesh. 100% Nylon-Colors, 100% Polyester, 3.9 oz/sq yd.
AZ	Bright Dazzle Warp Knit. 100% Nylon-Colors, 100% Polyester-Whites, 4.4 oz/sq yd.
BN	Flat Back Mesh Interlock. 100% Polyester, 7.1 oz/sq yd.
DP	Dri-Power [®] Bird Eye Mesh. 100% Polyester-Colors & White, 4 oz/sq yd.
DP2	Dri-Power [®] Bird Eye Mesh. Heavy Weight. 100% Polyester-Colors & White 5.9 oz/sq yd.
HP	Waffle Knit with Moisture Management. 100% Polyester-Colors & White, 4 oz/sq yd.
JA	Mesh Fleece with Moisture Management. 100% Polyester-Whites & Colors, 7.4 oz/sq yd.
LG	Stretch Double Knit. 100% Polyester, 7.5 oz/sq yd.
QL	Microdenier Double Knit. 100% Polyester-Colors & White, 8.1 oz/sq yd.
RQ	Jacquard Circular Knit. 100% Polyester-Colors & White, 5.0 oz/sq yd.
RT	Jacquard. 100% Polyester-Colors & White, 8.5 oz/sq yd.
S2	Circular Knit. 94% Nylon/6% Spandex-Colors 5.4 oz/sq yd, 93% Polyester/7% Spandex-White 5.6 oz/sq yd.
SM	Stretch Mesh. 88% Nylon/12% Spandex-Colors 8.2 oz/sq yd, 90% Polyester/10% Spandex-White 8.3 oz/sq yd.
V2	91% Polyester/9% Spandex-Colors, 92% Polyester/8% Spandex-White, 5.5 oz/sq yd.
VH	Spandex Mesh. 72% Nylon/28% Spandex-Colors, 72% Polyester/28% Spandex-White, 5.6 oz/sq yd.
VT	Dri-Power Stretch Mesh. 92% Nylon/8% Spandex-Colors, 92% Polyester/8% Spandex-White, 6.9 oz/sq yd.
XC	Xtreme Compression Warp Knit. 86% Nylon/14% Spandex-Colors, 86% Polyester/14% Spandex-White, 8.5 oz/sq yd.
XP	Xtreme Power Warp Knit. 82% Nylon/18% Spandex-Colors, 81% Polyester/19% Spandex, 8.2 oz/sq yd.
Z7	Bright Nylon Warp Knit Mesh. 88% Nylon/12% Spandex-Colors, 88% Polyester/12% Spandex-White, 8.4 oz/sq yd.

GENERAL CARE INSTRUCTIONS

Follow the recommended care instructions as labeled in each uniform.

GENERAL CARE INSTRUCTIONS

- New Uniforms** Russell recommends the following procedures be used on newly received uniforms to prepare them for use.
 Wash a medium sized load of uniforms in Cold water (80 ± 5°F) with 1-2 ounces of mild detergent (pH under 10) on an extra large laundry setting for 3 minutes and then drain. Do not overload the machine.
 Re-wash using the same settings without detergent for 3 minutes and drain.
 Re-wash again in Cold water (80 ± 5°F) with 1-2 ounces of mild detergent (pH under 10) on an extra large laundry setting for 3 minutes and drain.
 Wash a final time using the same settings without detergent for 5 minutes and drain.
 Use the Spin cycle on the washer to extract as much water as possible and tumble dry the garments using very low heat.
- Laundering Prep** For best results and maximum wear, launder uniforms immediately after each use.
 Uniforms need to be inspected for normal wear and tear so repairs can be made prior to washing to prevent further damage.
 Close any hook and loop tape openings to prevent hook and loop from snagging material during wash.
 Remove belts and pads, if possible, from uniform before laundering.
 Do not allow uniforms to lay on itself or in a pile when wet because perspiration can cause fading or color bleeding.
- Pre-Treating** Pretreat stains with pre-wash, stain remover or protein release agent while uniform is still damp for no more than 30 minutes.
 Do not soak uniforms containing nylon or nylon spandex blend.
- Washing** Wash uniforms in Cold water (80 ± 5°F) as soon as possible after each use, before stains are allowed to set.
 A mild detergent (pH under 10) should be used.
 Do not overload the machine.
 Use recommended amount of detergent as per detergent manufacturer.
 Rinse uniforms in Cold water (80 ± 5°F).
 Remove uniforms from machine immediately after washing to avoid color migration.
 Do not use chlorine bleach.
 Do not use fabric softener.
 Wash white uniforms separately from colored uniforms.
- Drying** Remove promptly from washer.
 Turn uniform reverse side out before machine drying.
 Tumble dry on low setting (< 140°F).
 Note excessive heat can cause garment shrinkage, discoloration, degradation, and cracking of lettering.
 Do not use fabric softener or dryer sheet.
- Storage** Uniforms should be completely dry before storing.
 Store in a cool, dry place away from direct sunlight and fluorescent lighting to prevent mildew or yellowing.
- Dry Cleaning** Do not dry clean uniforms.
- Ironing** Do not iron uniforms

SUBLIMATED UNIFORM LAUNDERING GUIDE

1. Please remember that SUBLIMATED garments may be subject to dye migration due to the following reasons:
 - a. From sitting wet for a prolonged period of time
 - i. Prevent from sitting wet in a pile, on a bench, or in a bag after use. Hang until being laundered.
 - ii. Prevent from sitting wet in a washer of water or in the bottom of a washer.
 - b. From exposure to heat over 220 degrees.
 - i. The dye may be re-activated to a gas state and move onto any other part of the garment that it may touch when too hot.
 - ii. Avoid heat whenever possible. If heat is being used for drying, please use lowest heat and remove promptly from the warm dryer.
2. Since the majority of Russell Athletic uniforms are treated with a moisture management chemical, there is no need to expose the garments to heat as a part of the laundering process.
 - a. Heat breaks down the garment fabric, the colors, the decoration, and the spandex fibers in the fabric.
3. The suggestion is to WASH following the enclosed instructions; SPIN OUT any excess water; REMOVE from the washer; HANG on a plastic hanger to dry.

www.unx.com as they are cleaning professionals and located in Greenville, NC.

FOR FURTHER WASHING INFORMATION, GO TO WWW.UNXINC.COM